



SPPIN | SAINTS-PERES
Paris Institute for
the Neurosciences

Systems Neuroscience : Motor adaptation and sensory prediction in the Cerebellum

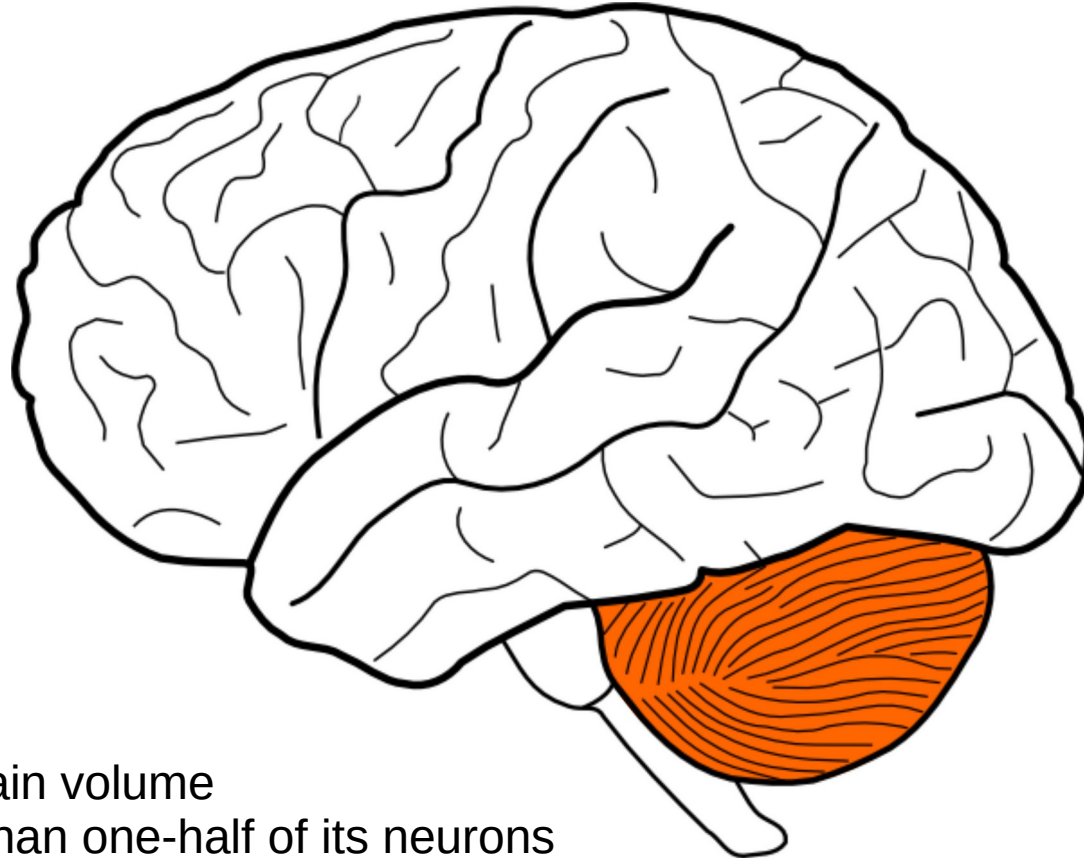
Michael Graupner (PhD)

Saints-Pères Paris Institute for the Neurosciences - SPPIN

CNRS UMR 8003, Université Paris Cité

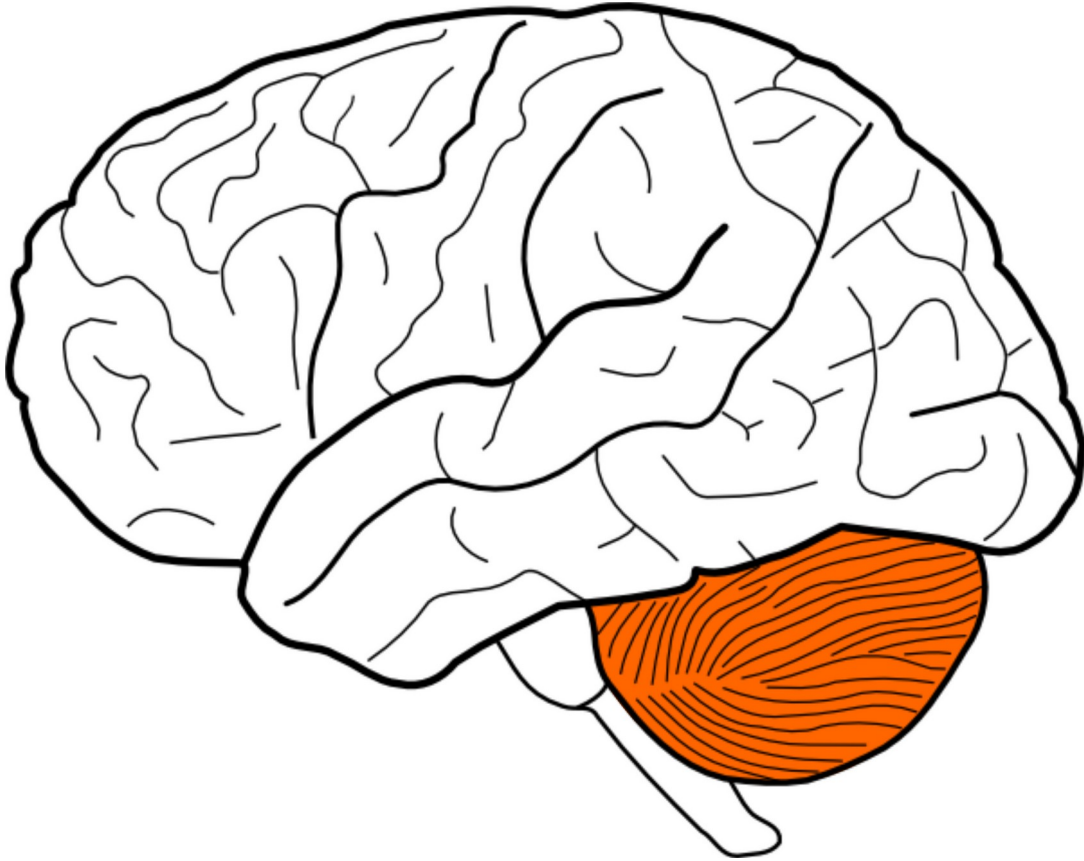
slides : <https://biomedicale.u-paris.fr/~mgraupne/teaching.php>

Cerebellum



10 % of the total brain volume
but contains more than one-half of its neurons

Cerebellum



contains highly regular, repeating units with the same basic microcircuit

different regions receive inputs from different parts of the brain and project to different motor systems

similarity (architecture, physiology) suggests similar computational operations

Talk outline

1. Cerebellar disorders

- functions inferred from symptoms
- eye-arm movement coordination with prism glasses

2. Prediction of sensory consequences

Electric fish

- anatomy and physiology of the weakly electric fish
- cerebellar circuitry
- cerebellum-like structures
- electric fish and prediction of sensory consequences

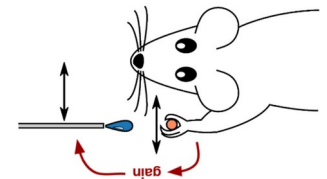
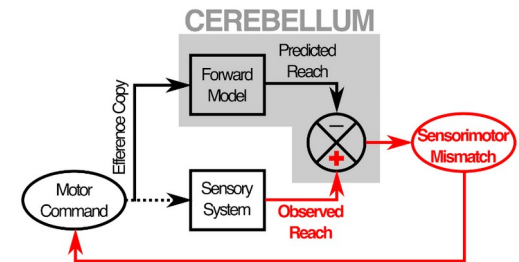
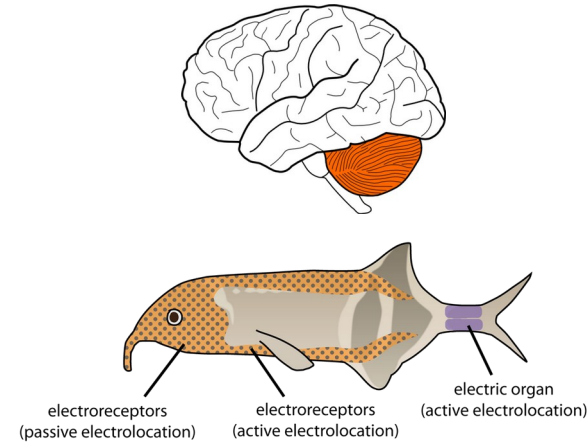
Sensory prediction in mammals

3. Motor control and internal models

- forward and inverse model
- forward model and the cerebellum

4. Experiments implemented in the lab to unravel cerebellar function

- sensorimotor mismatches in mice



Talk outline

1. Cerebellar disorders

- functions inferred from symptoms
- eye-arm movement coordination with prism glasses

2. Prediction of sensory consequences

Electric fish

- anatomy and physiology of the weakly electric fish
- cerebellar circuitry
- cerebellum-like structures
- electric fish and prediction of sensory consequences

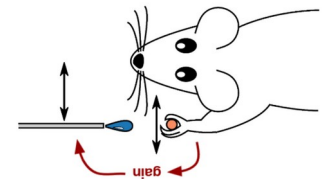
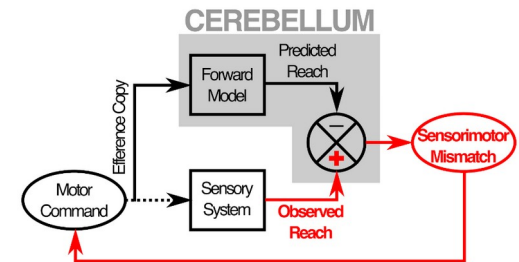
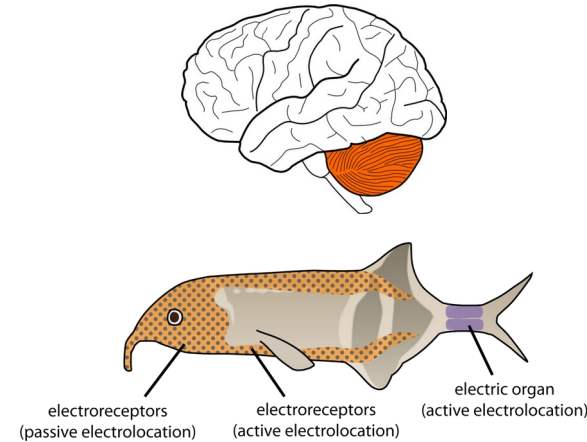
Sensory prediction in mammals

3. Motor control and internal models

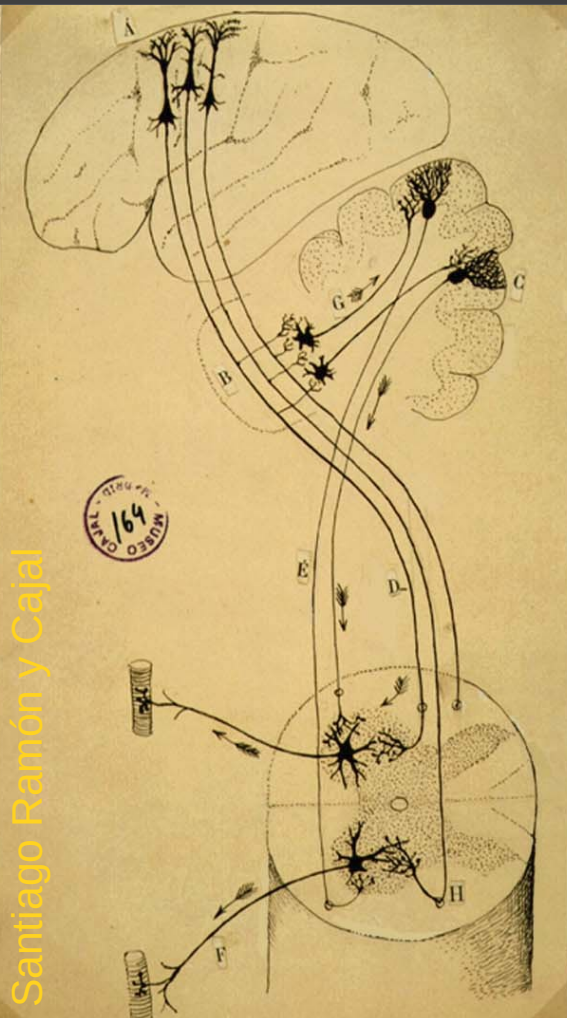
- forward and inverse model
- forward model and the cerebellum

4. Experiments implemented in the lab to unravel cerebellar function

- sensorimotor mismatches in mice



Cerebellum controls movement



Classical view :

Cerebellum *participates* in the control of movement.
The cerebellum ensures that movements are well timed and highly coordinated.

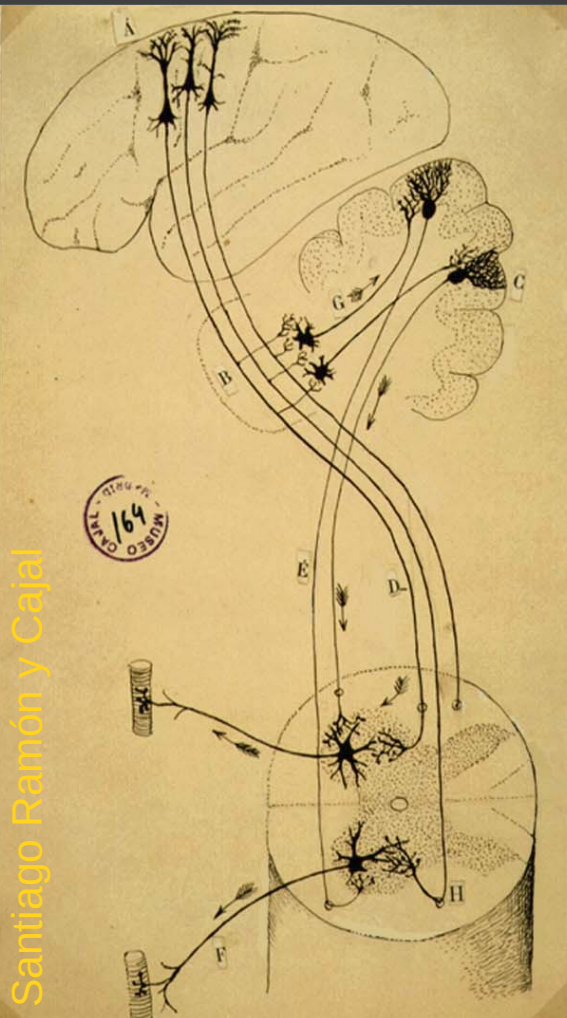
Inferred from cerebellar damage in humans :

Disorders result in disruptions of normal movement.

Goal of cerebellar research :

How to the connections and physiology of cerebellum define the role in motor control.

Symptoms of cerebellar disorders



Hypotonia :

diminished resistance to passive limb displacement

Astasia-abasia :

inability to maintain steady limb or body posture across multiple joints - inability to maintain upright stance against gravity

Ataxia :

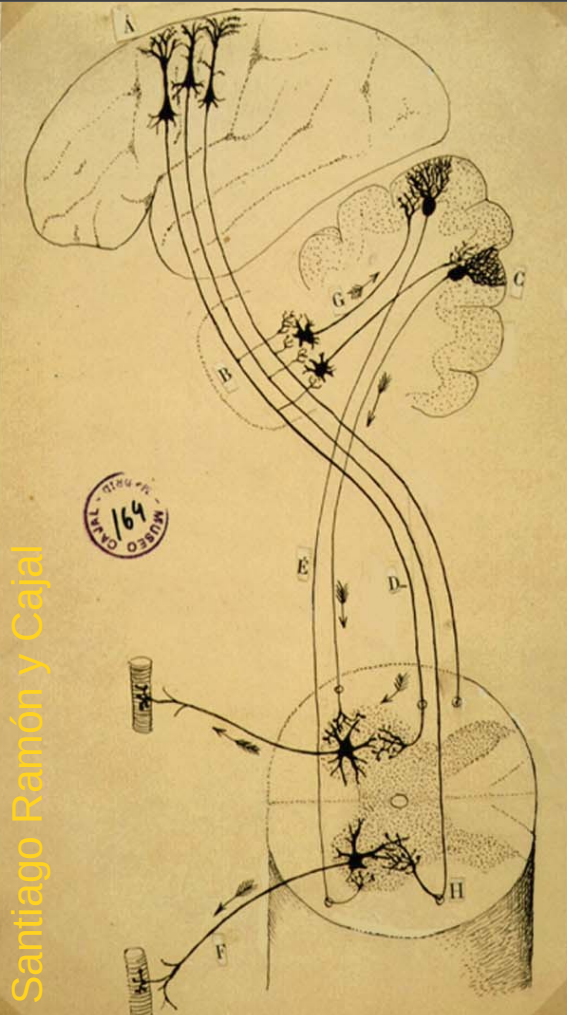
abnormal execution of multi-joint voluntary movements, lack of coordination

Action tremor :

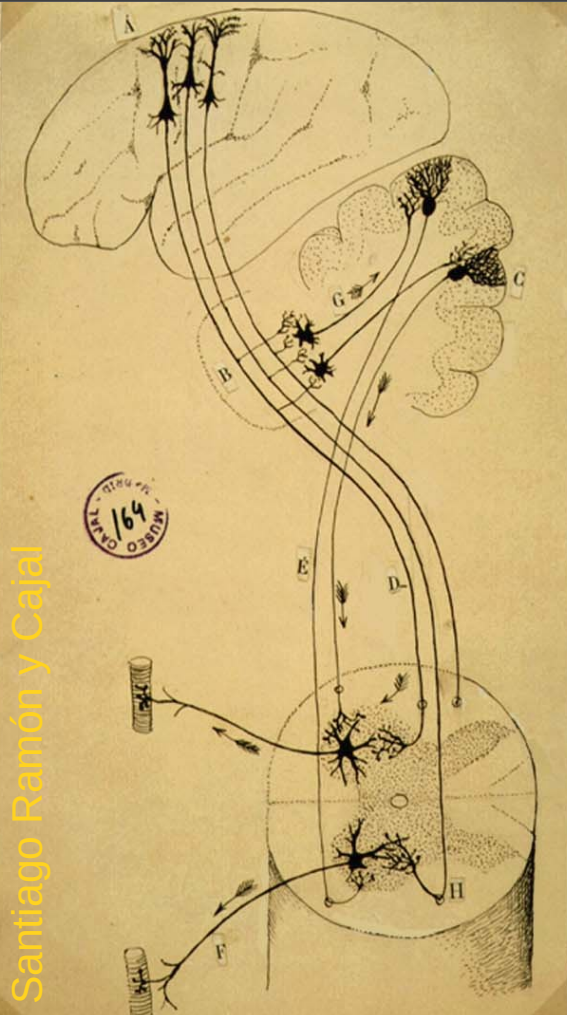
tremor at the end of movement

Symptoms of cerebellar disorders

Patient with cerebellar ataxia



Derived functions of the cerebellum



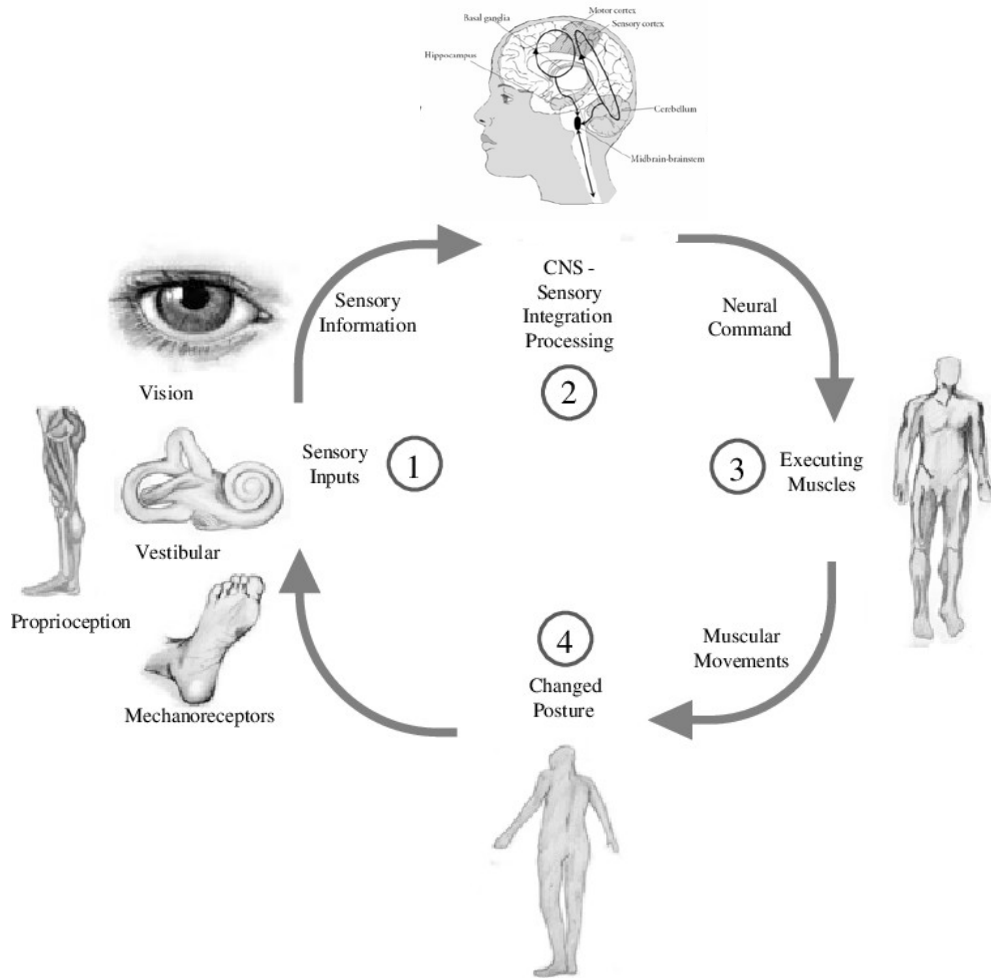
- Initiation and control of voluntary movements
- Timing of movement/muscle action
- Moment-to-moment corrections of errors
- Compensating for lesions of the cerebral cortex
- Motor learning and adaptive adjustments

What is movement ?



sensory and motor inputs are integrated to generate appropriate activation of muscle and joint combinations

What is movement ?



sensory and motor inputs are integrated to generate appropriate activation of muscle and joint combinations

Prism glasses



- experimental paradigm to study the learning of a synergy between vision and motor output
- adaptation of the eye-hand coordination when wearing prism goggles

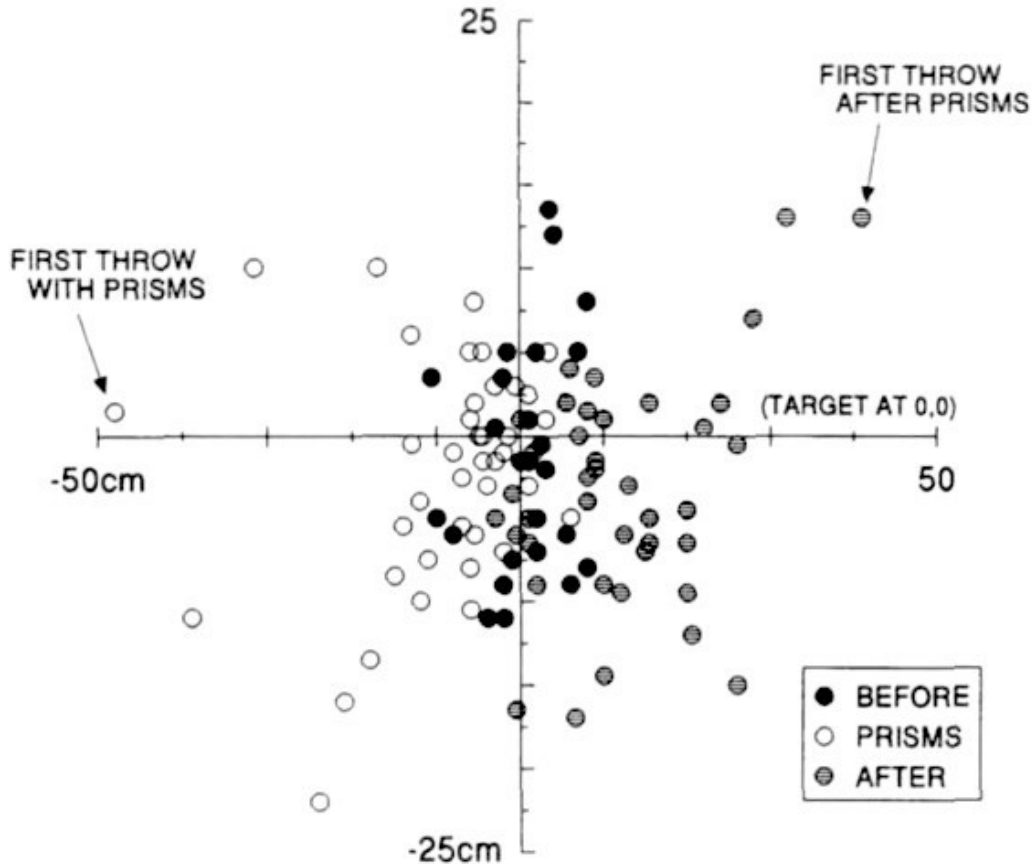
[experiment]

Prism glasses



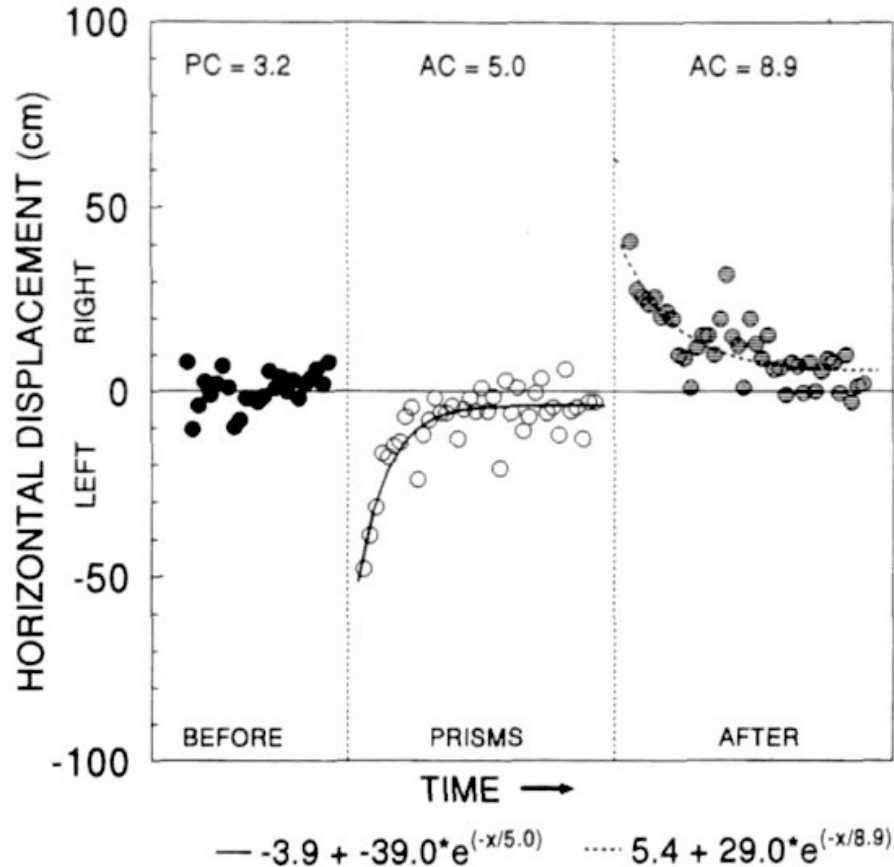
- humans usually fixate a target and throw in the direction of the gaze
- relationship between the direction of the gaze and arm movement is adjustable

Throwing while looking through prisms



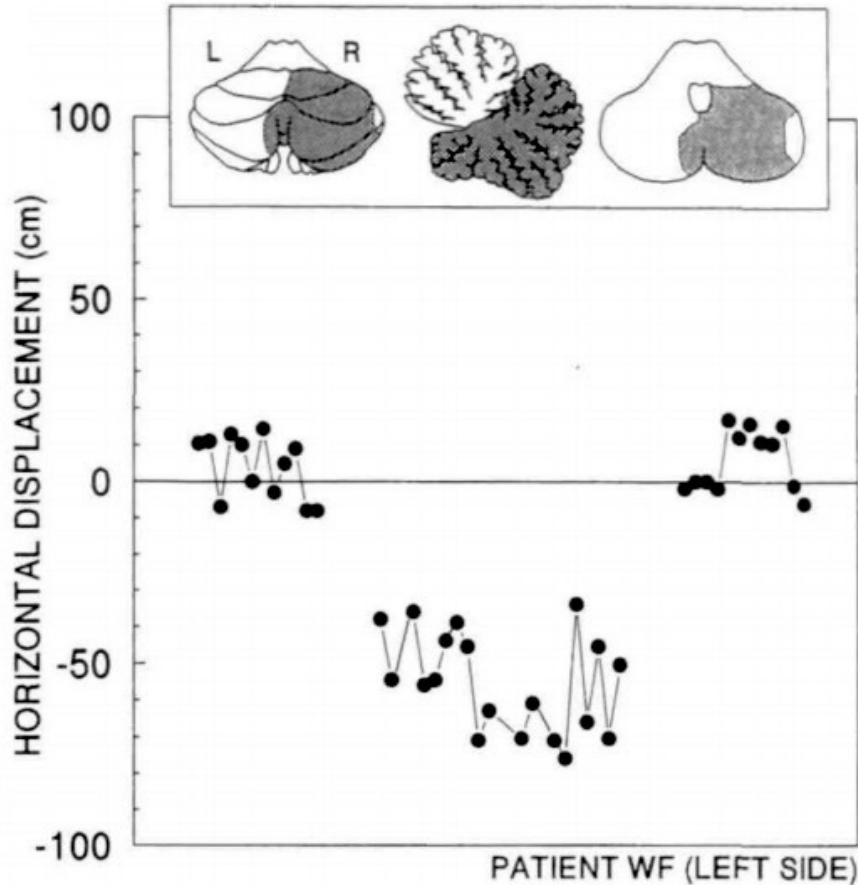
- The initial throw in the direction of gaze misses target to the side by an amount proportional to the diopter of the prism (in our case 30 %)
- subject gradually increase angle between gaze and throw to land on target again
- after glasses are removed, gaze is on target, but the widened angle btw. gaze and throw persists; this 'negative after-effect' diminished with repeated throws

Throwing while looking through prisms



- The initial throw in the direction of gaze misses target to the side by an amount proportional to the diopter of the prism (in our case 30 %)
- subject gradually increase angle between gaze and throw to land on target again
- after glasses are removed, gaze is on target, but the widened angle btw. gaze and throw persists; this 'negative after-effect' diminished with repeated throws

Cerebellar patients : throwing while looking prisms



- patients with cerebellar disorders show slow or no adaptation of the eye-hand
- example on the left : patient with right sided infarct of the posterior inferior cerebellar artery

Talk outline

1. Cerebellar disorders

- functions inferred from symptoms
- eye-arm movement coordination with prism glasses

2. Prediction of sensory consequences

Electric fish

- anatomy and physiology of the weakly electric fish
- cerebellar circuitry
- cerebellum-like structures
- electric fish and prediction of sensory consequences

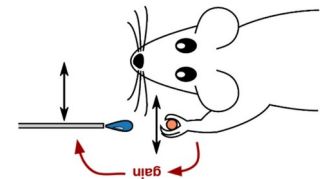
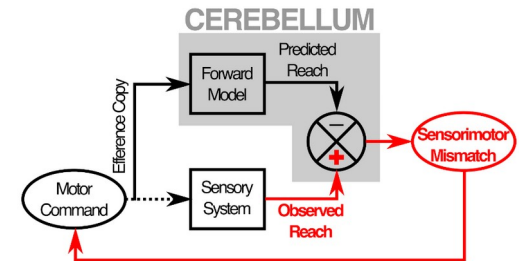
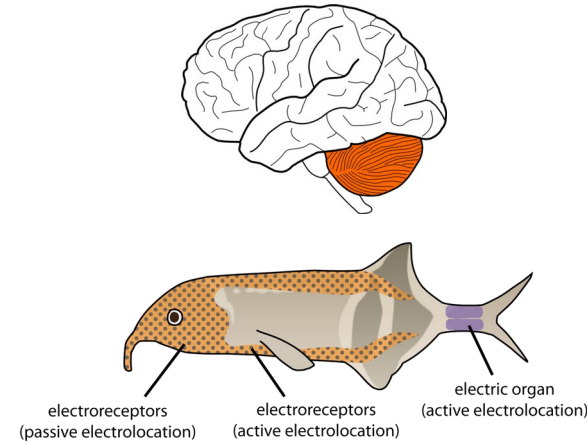
Sensory prediction in mammals

3. Motor control and internal models

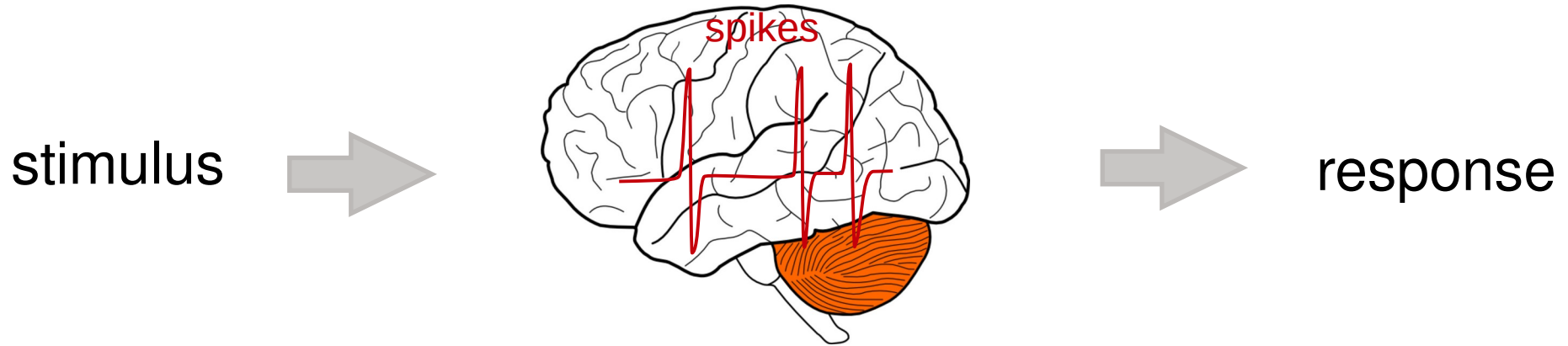
- forward and inverse model
- forward model and the cerebellum

4. Experiments implemented in the lab to unravel cerebellar function

- sensorimotor mismatches in mice

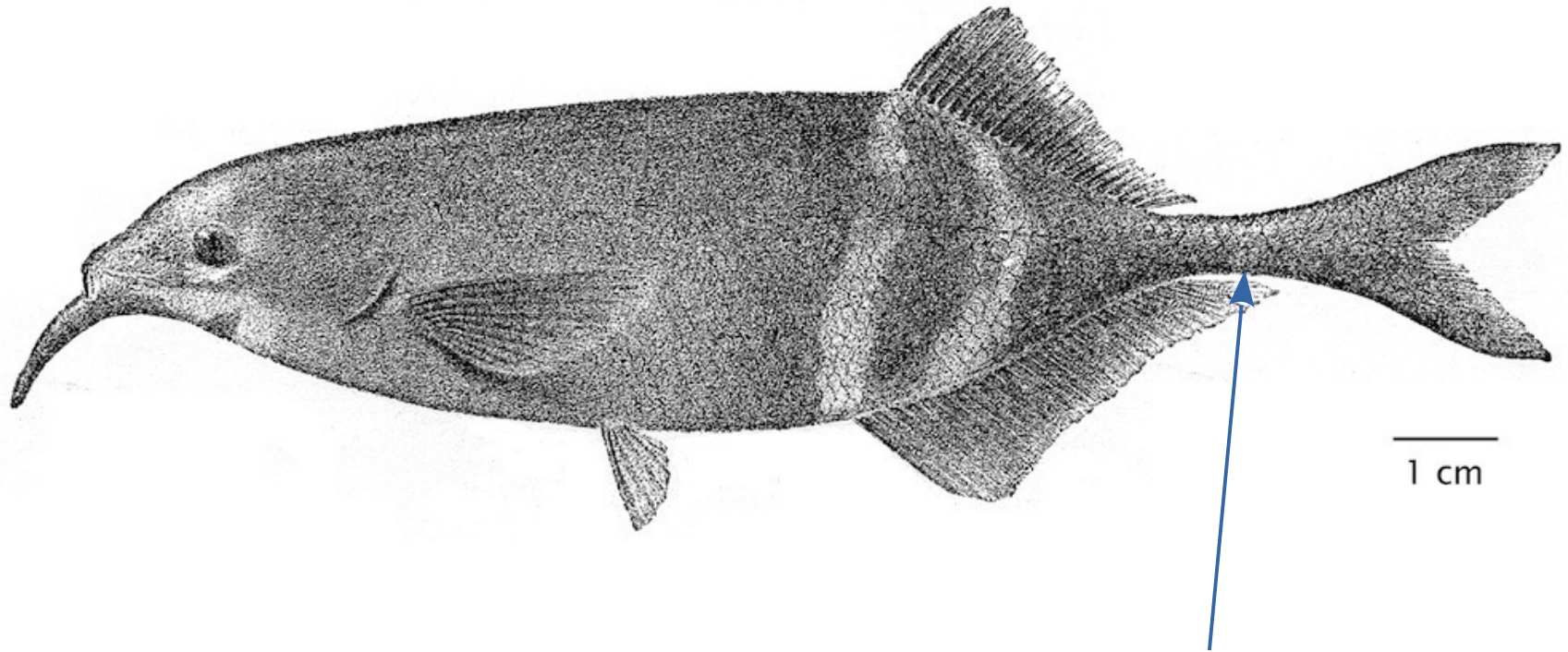


Neural code and cerebellum



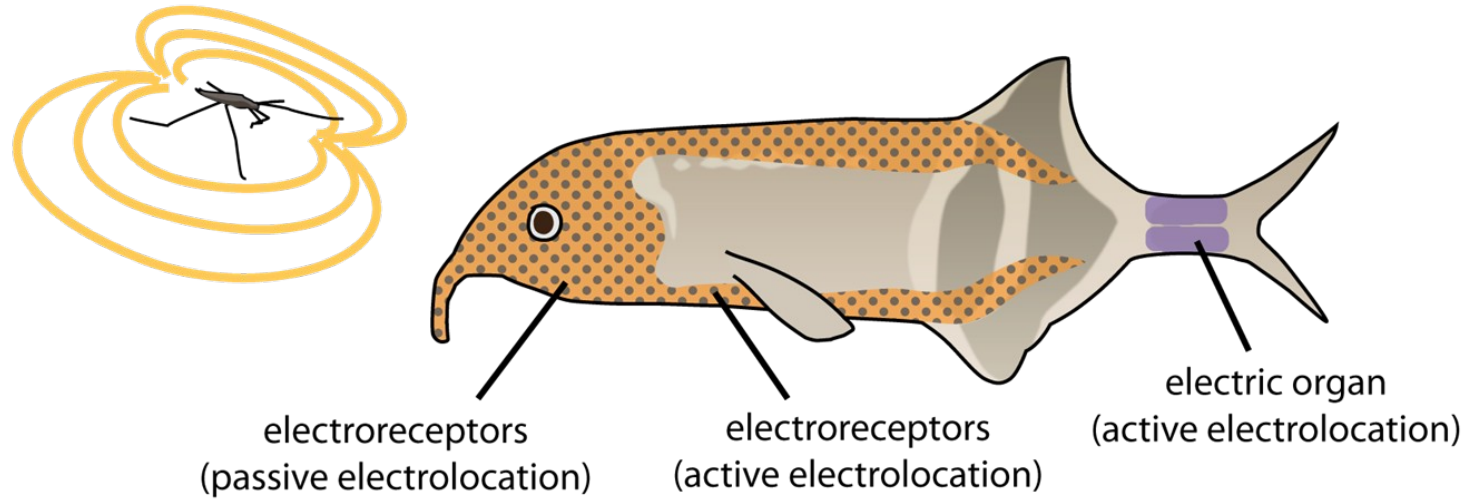
- Neural coding : establishing the relationship between stimulus and individual or ensembles of neuronal responses
- Which information is represented ?
- **Cerebellum** : cerebellar circuits generate and test predictions about movement, reward, and other non-motor operations.

African weakly electric mormyrid fish



- possess electroreceptors on their skin that are sensitive to weak, low-frequency electrical fields in the environment
- additionally has specialized organ (typically located in the tail) that generates a weak electrical field known as an electric organ discharge (**EOD**)

African weakly electric mormyrid fish



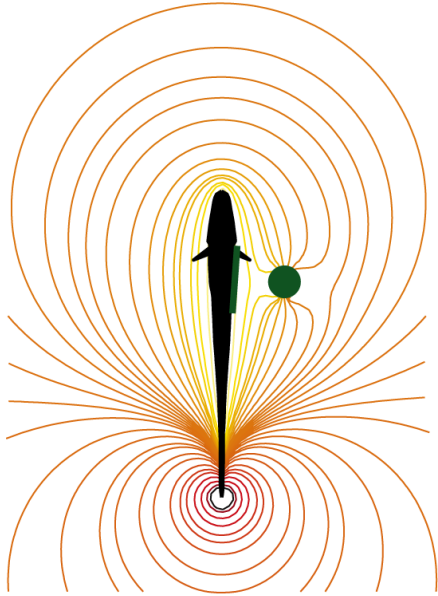
- Active and passive electrolocation are mediated by separate classes of electroreceptors

- electric organ discharge (**EOD**) used to sense environment and communicate (like whisking in rodents)
- 2-4 /s in resting-, 10-30 /s in moving fish

Electric organ discharge : usage

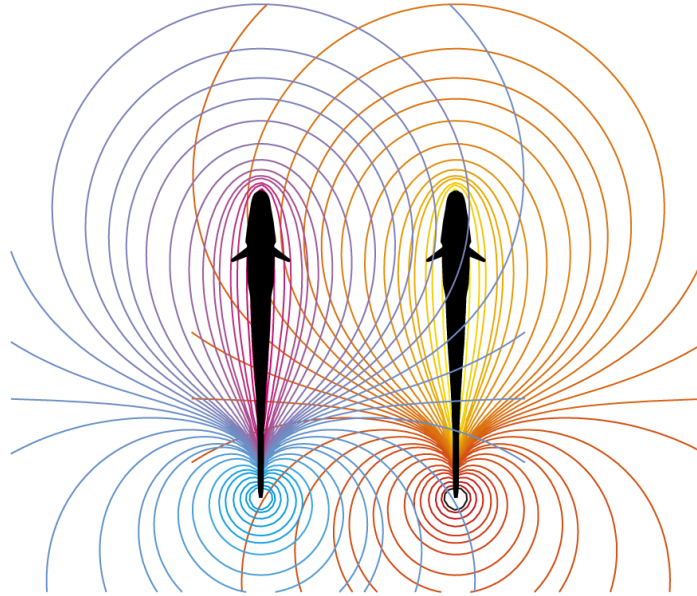
- Active and passive electrolocation are mediated by separate classes of electroreceptors; 3 receptor classes in total

electrolocation



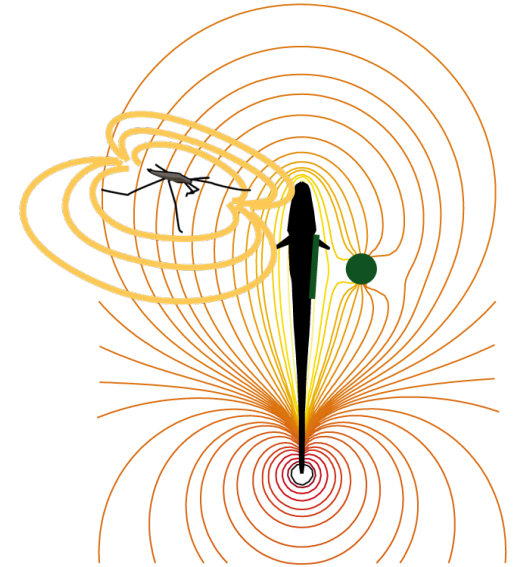
1) mormyromast : active electrolocation

electrocommunication



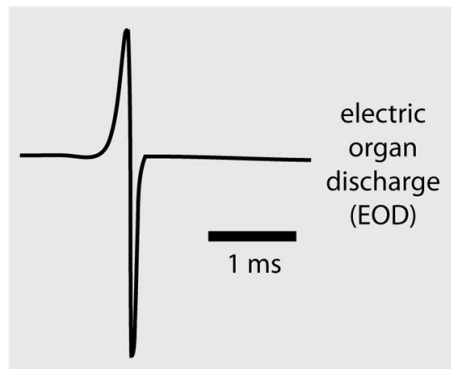
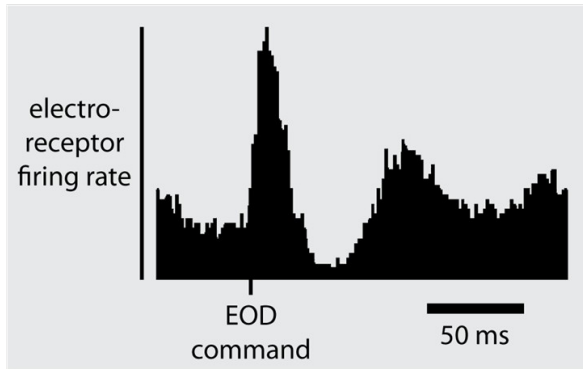
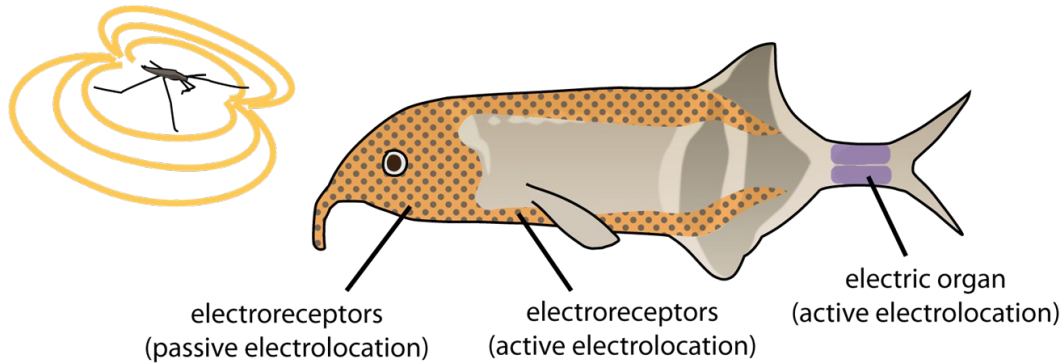
2) Knollenorgan : detecting EOD of other fish

electrolocation



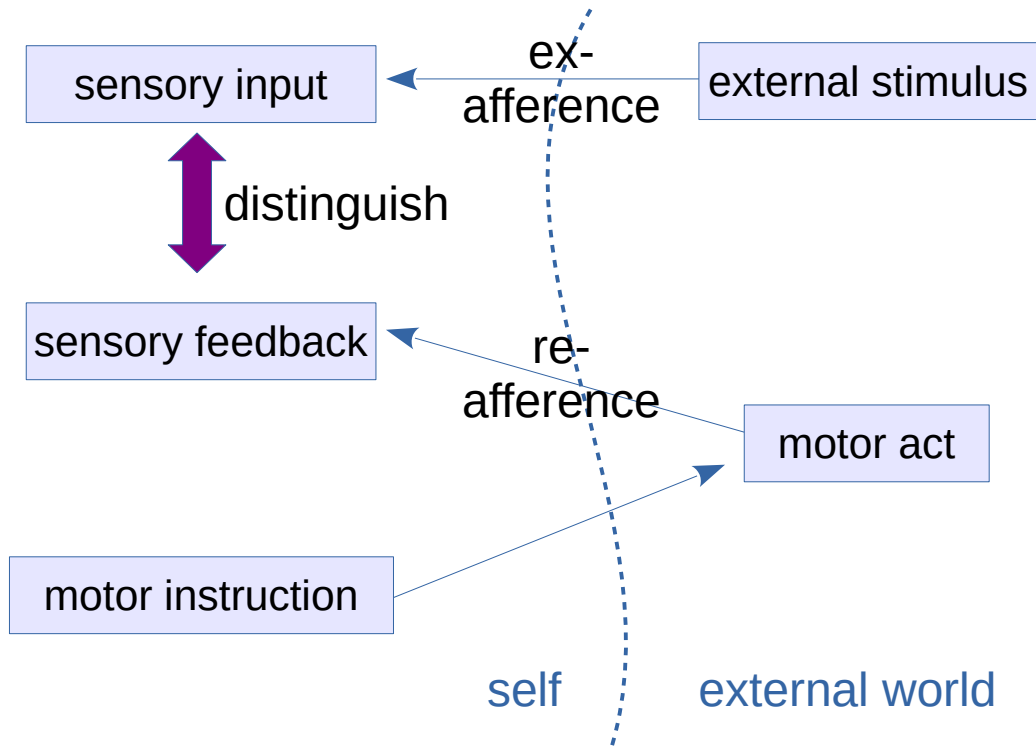
3) ampullary : can measure weak electric fields that all animals generate in water

Challenge for the fish



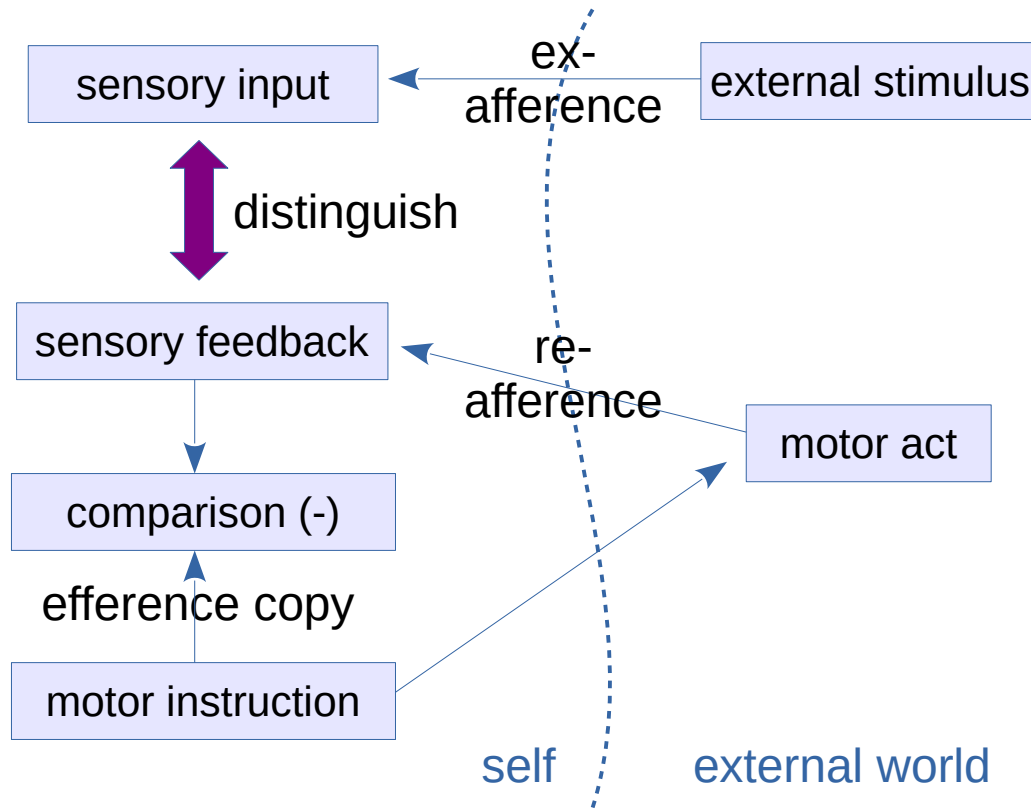
- **problem** : passive (ampullary) electroreceptors are strongly affected by the fish's own EOD pulse
- **possible solution** : external and self-generated input can be distinguished based on additional information about own movement and behavior
- **implementation** : convergence of two distinct input streams – peripheral electrosensory input *and* information about own movement and behavior

Challenge for the fish and others species



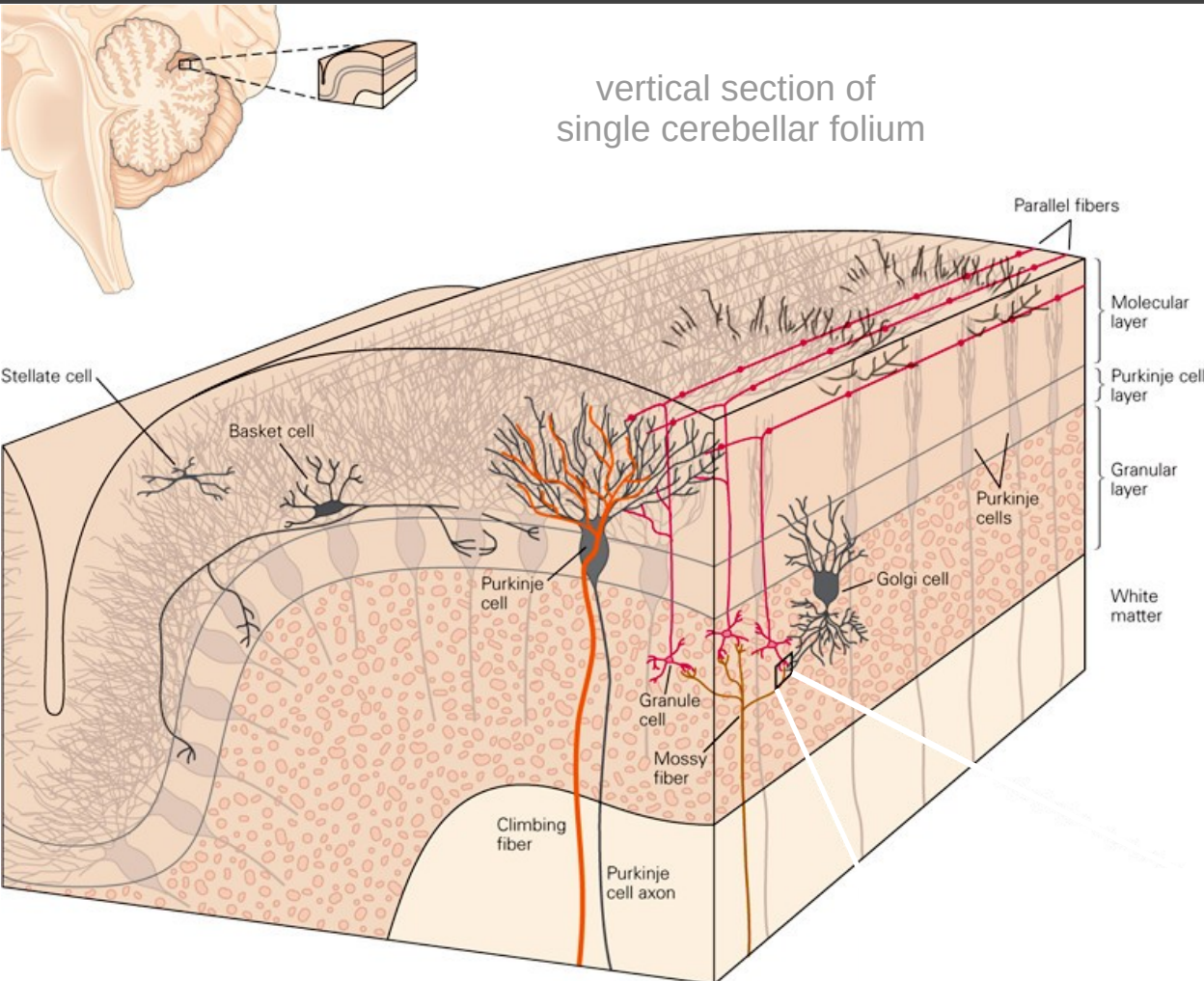
- sensory inputs are evoked by external stimuli (ex-afference)
- every motor act will also elicit sensory inputs (re-afference)
- this can be disruptive because it can interfere with sensing of external stimulus sources
- **challenge** : distinguish between externally and self-generated inputs

Challenge for the fish and others species



- every motor act will elicit sensory inputs (called refference)
- refference can be disruptive because it can interfere with sensing of external stimulus sources
- problem can be solved with signals from the motor command center to appropriate sensory receiving areas that nullify the effect of the unwanted refference
- these signals are called efference copies/corollary discharges
- appropriate summation (negative image) of efference copy and refference could reduce refference effect
- requires implementation of an adaptive filter which removes predictable features of the sensory input

Microcircuit organization of the cerebellar cortex

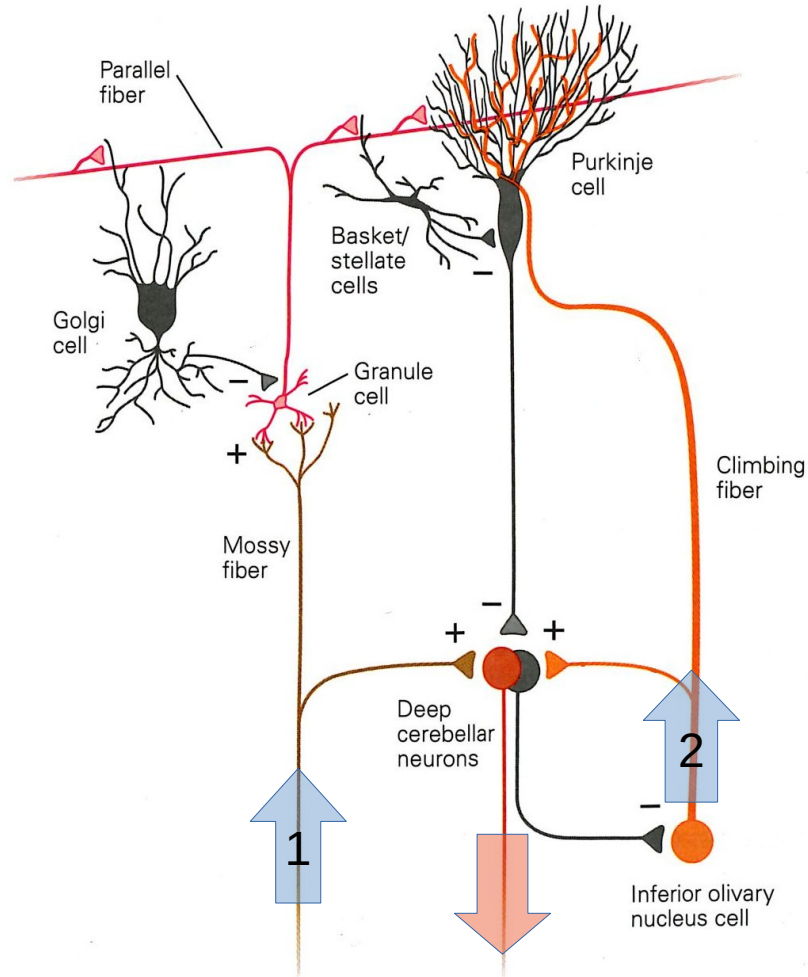


vertical section of
single cerebellar folium

cerebellar cortex : five types of neurons organized in three layers

- *granular layer* : input layer, vast number of granule cells and Golgi interneurons; mossy fibers terminate in this layer
- *Purkinje cell layer* : output layer of the cerebellar cortex; input from parallel fibers, Stellate and Basket cells and climbing fibers
- *molecular layer* : inhibitory neurons; axons of granule cells - parallel fibers

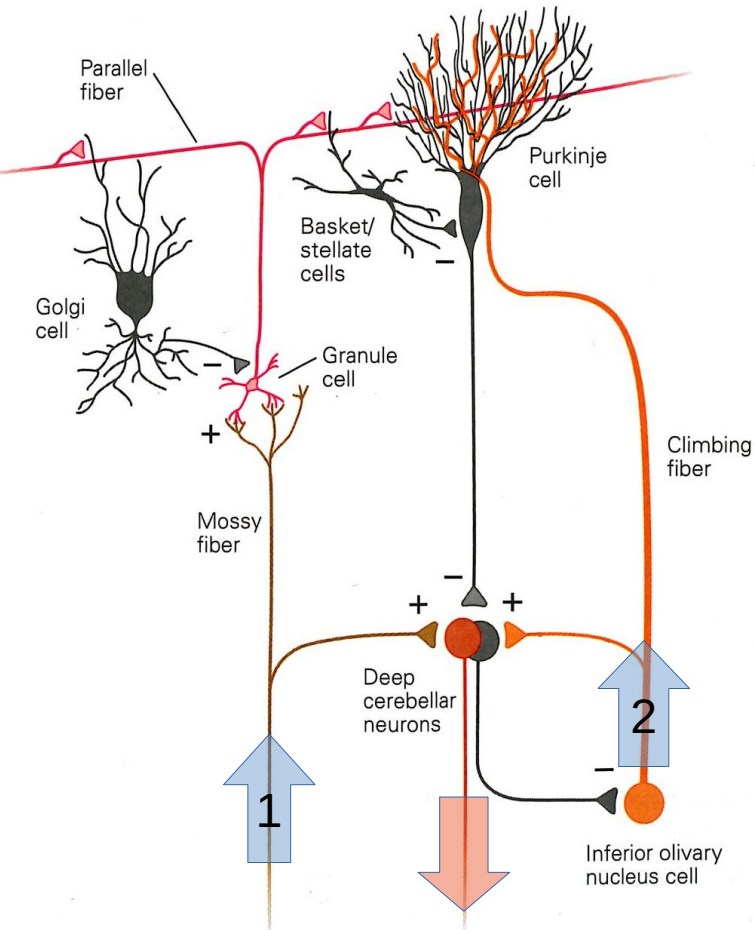
Synaptic organization of the cerebellar microcircuit



Two afferent fiber systems encode information differently

- *1. mossy fibers* : from cells in spinal cord and brain stem, carry sensory information about periphery and cerebral cortex
- *2. climbing fibers* : originate in inferior olivary nucleus and convey sensory information from periphery and cerebral cortex

Differences in the two input streams



1. mossy-parallel fibers

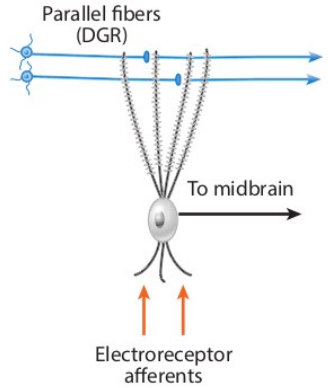
- convergence (mossy fiber to granule cell) and divergence (parallel fiber run across long distances) of signal flow
- produce brief, small excitatory events → simple spikes; inputs from many needed to have substantial effect on PC firing rate
- encodes magnitude and duration of peripheral stimuli or behaviors

2. climbing fibers

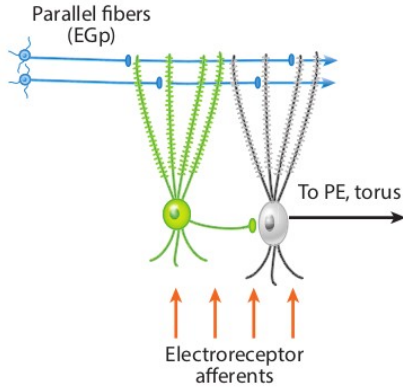
- specific connectivity : arranged topographically btw. inferior olive, PCs in parasagittal strips, deep nuclear neurons
- powerful influence on PC activity → complex spike
- seems specialized for event detection; synchronous activation signal important event

Cerebellum-like structures

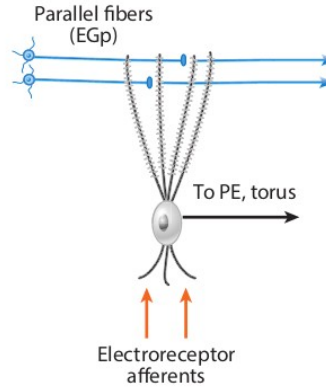
dorsal octavolateral nucleus
(fish: sharks, rays, and skates)



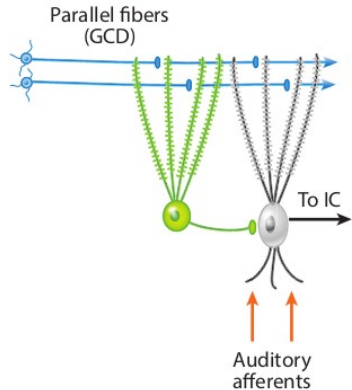
Mormyrid ELL



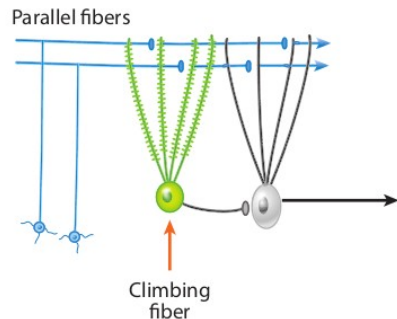
Gymnotid ELL



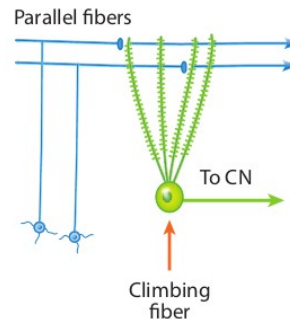
dorsal cochlear nucleus
(mammals, auditory system)



Teleost cerebellum

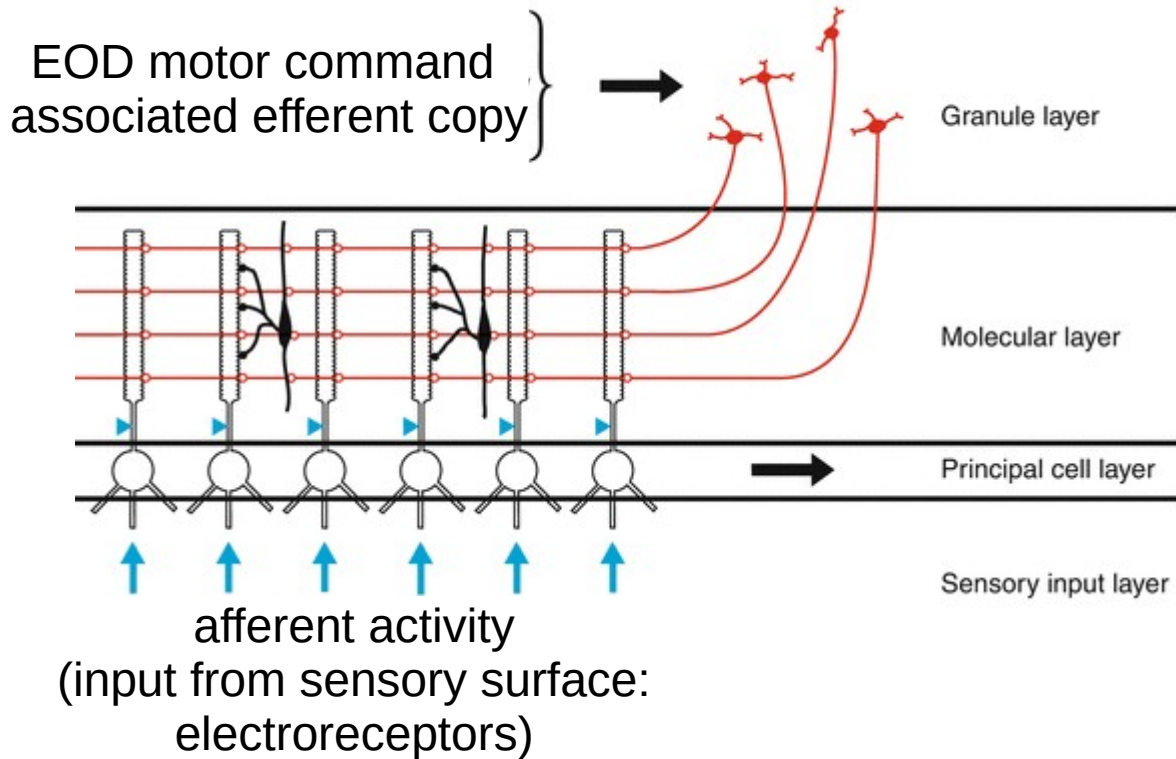


Mammalian cerebellum



- presence of two input streams is the defining feature of the cerebellum(-like) structures from fish to mammals
- all have principal cells, stellate cells and granule cells
- For all of the circuits shown, signals conveyed by parallel fibers can be used to predict signals from the sensory periphery or from climbing fibers

Cerebellum-like structures



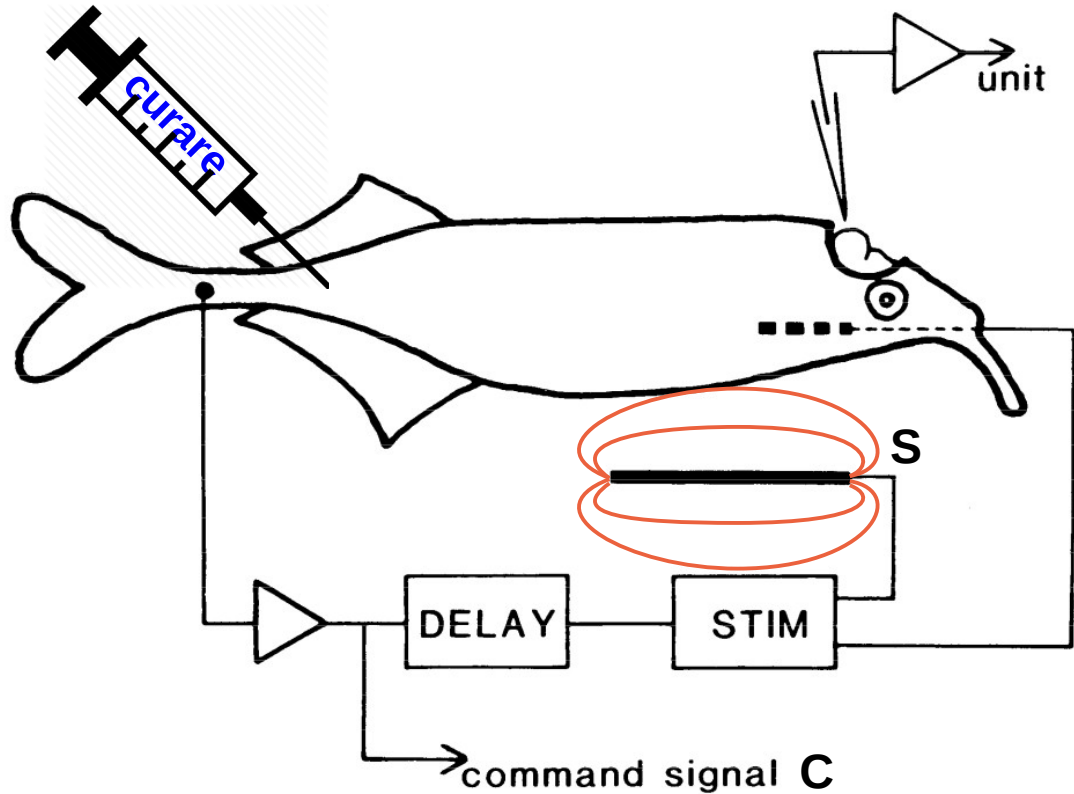
Granule cells:

convey efference copy that is associated with the motor command that causes the EOD

Principal cells:

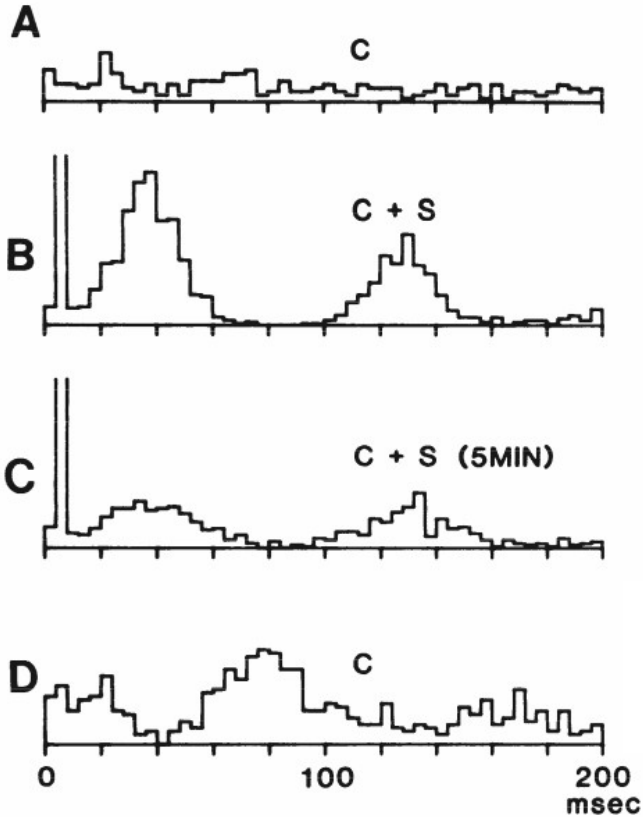
also receive afferent activity :
sensory input from
electroreceptors

Electric fish experiment: Bell 1982 J Neurophysiol



- Fish is curarized : curare blocks effect of motoneurons on electric organ (inhibitor of nAChRs)
→ no discharge
- command signal (**C**) of electromotoneurons recorded (occurrence rate 2-4 /s)
- this signal is used to trigger artificial electric pulses (**S**) in the water (delay ~1.5 ms) mimicking aspects of the EOD
- extracellular recordings from ELL
- fish in wax block perfused by water

Electric fish: effect of Command-Stimulus pairings



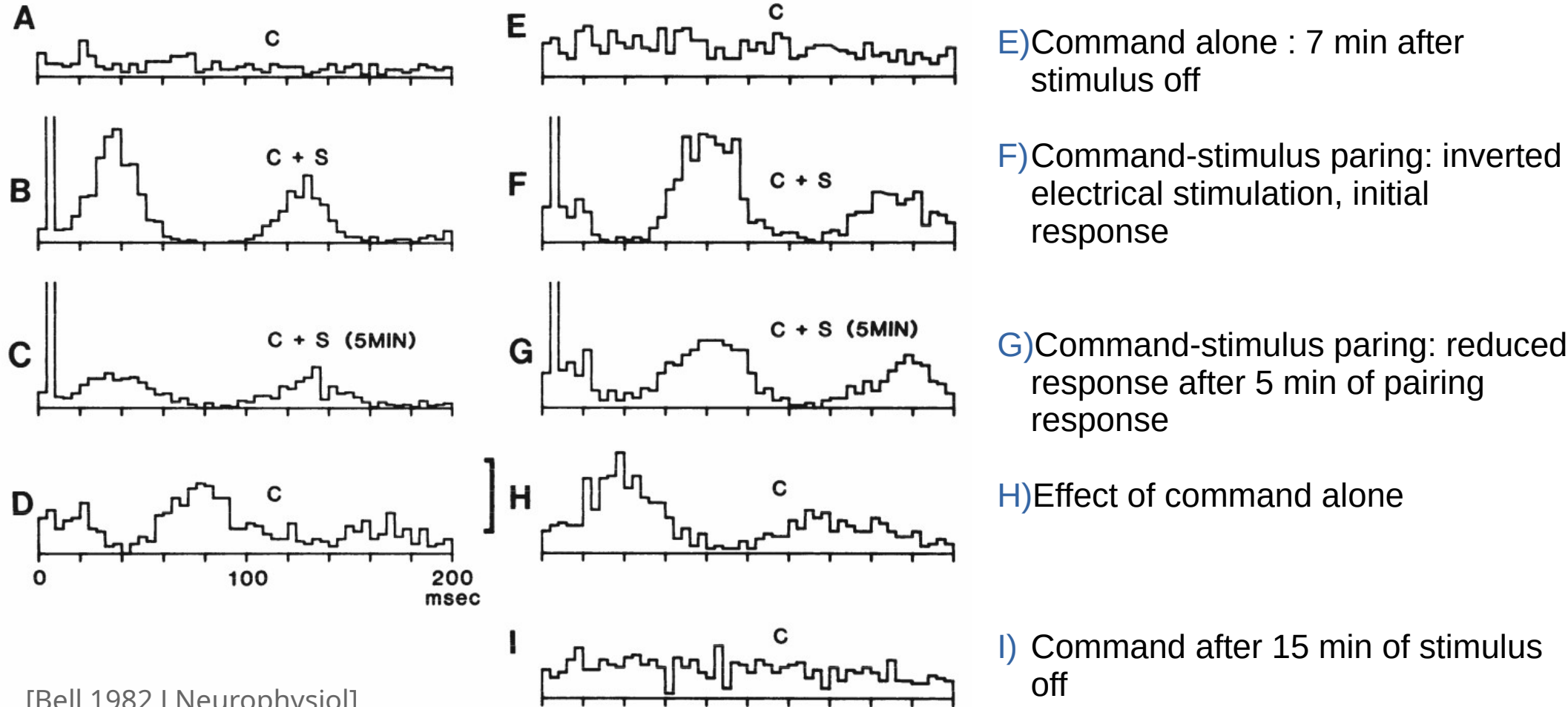
A) Command alone evokes no response

B) Command-stimulus pairing: initial response

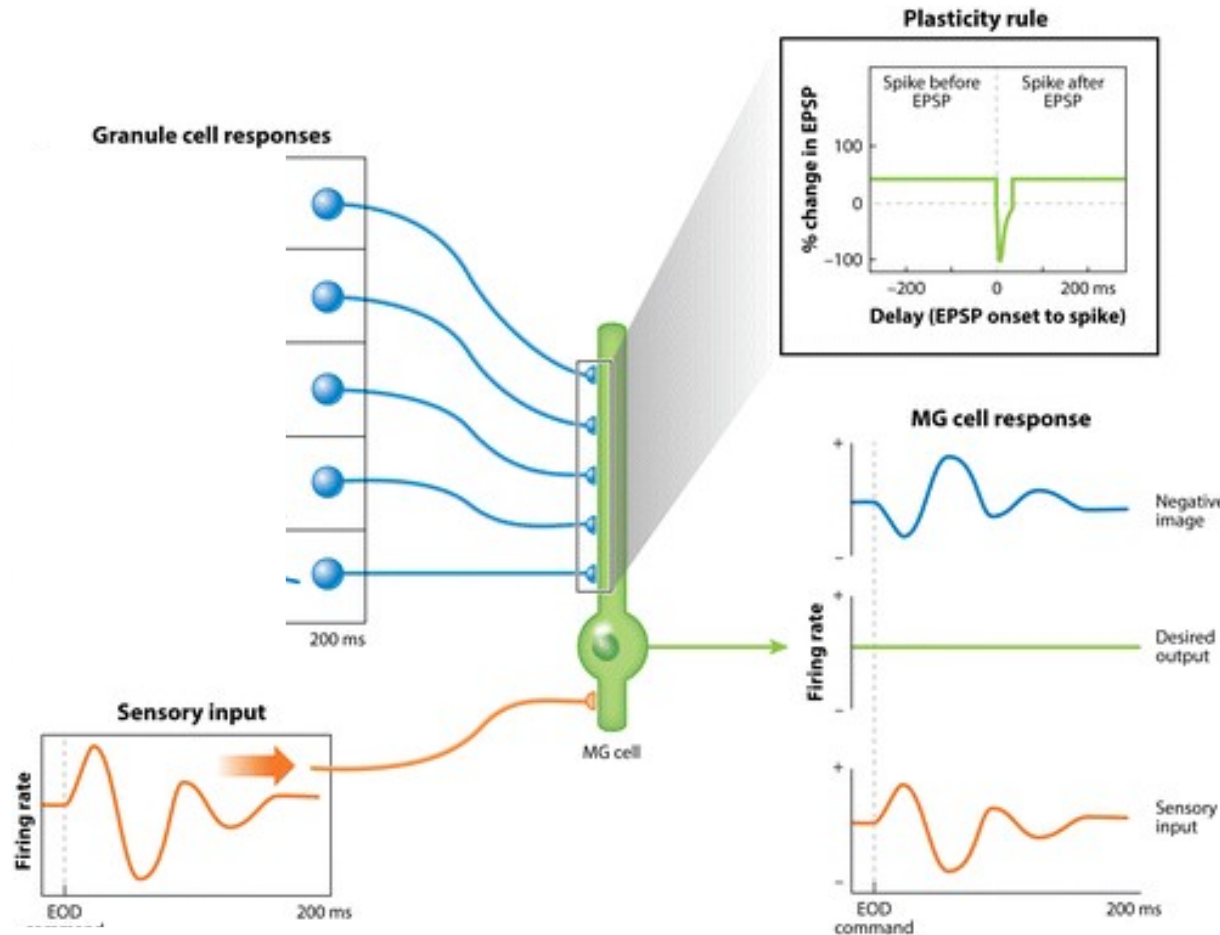
C) Command-stimulus pairing: reduced response after 5 min of pairing response

D) Effect of command alone immediately after 7 min of pairing

Electric fish: effect of Command-Stimulus pairings



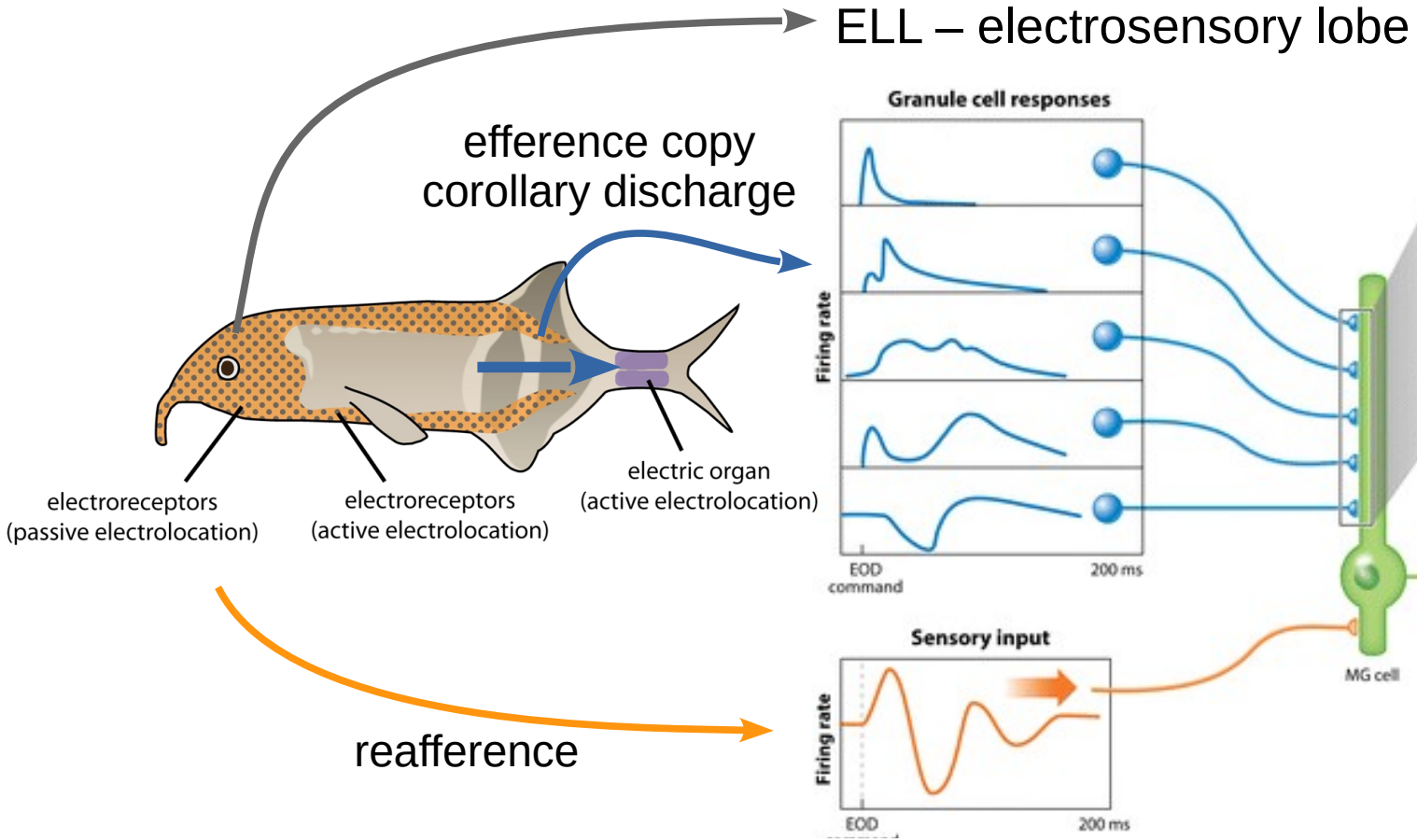
Electric fish experiment: circuit implementation



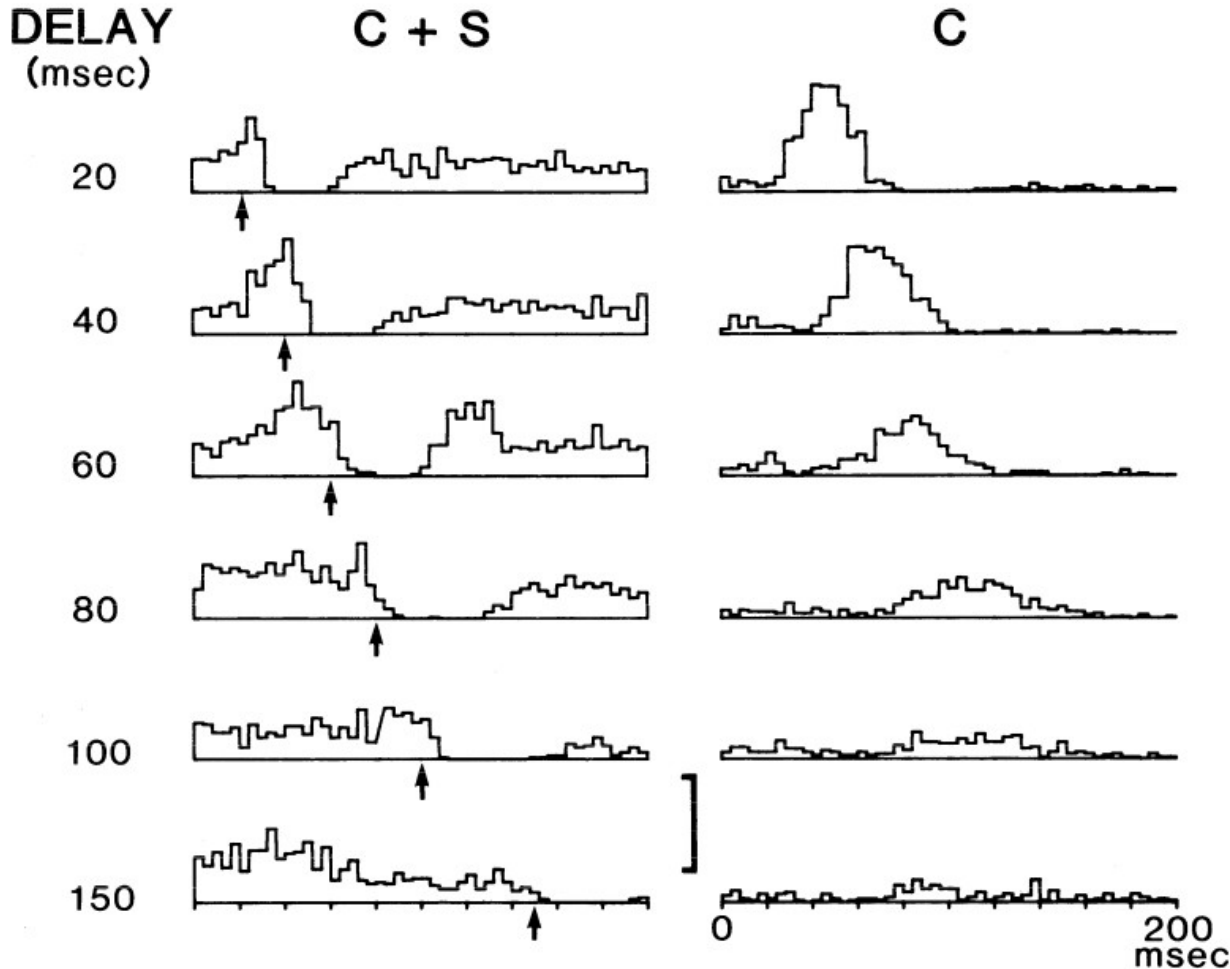
[Sawtell 2017 Annu. Rev. Physiol.]

- Sensory input (reafference) should be suppressed
- Desired output : no response to reafference
- Animal can use efference copies to create *negative image* of sensory input
- granule cell responses must be varied and prolonged
[Kennedy et al. 2014 Nat Neurosci]
- Requires plastic synapses : anti-hebbian plasticity rule
- correlations between pre- and postsynaptic activity should decrease synaptic strength

Electric fish experiment: circuit implementation

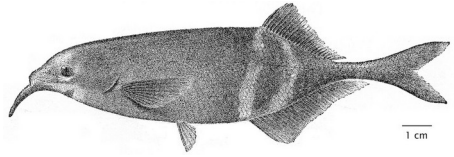


Electric fish experiment: varying stimulus delay

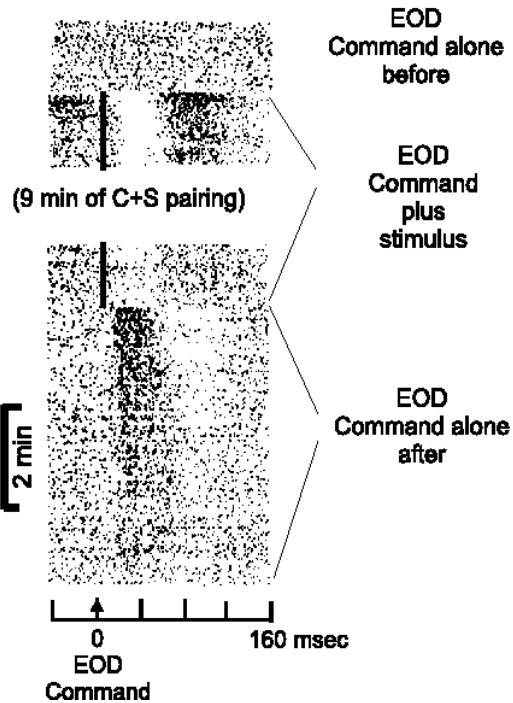


- effect of varying stimulus delay
- **left column :**
command and stimulus were paired for 3-4 min
- **right column :**
effect of the command alone
- in effect, tests the learning curve which implements the formation of the negative image

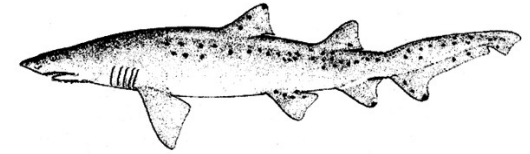
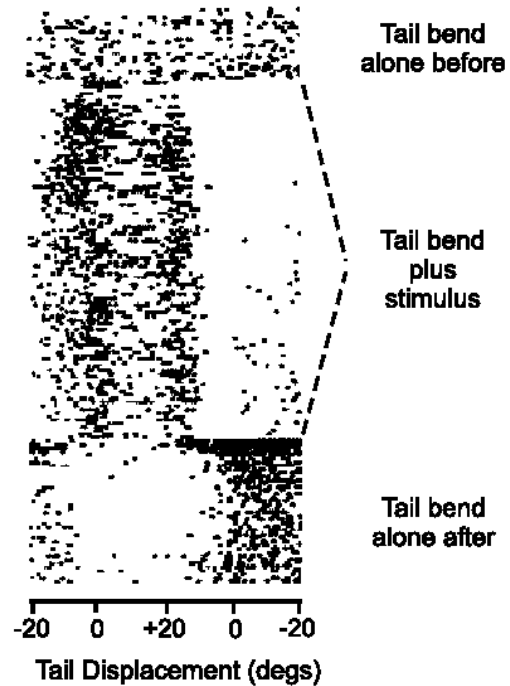
Formation of negative images in 3 cerebellum-like structures



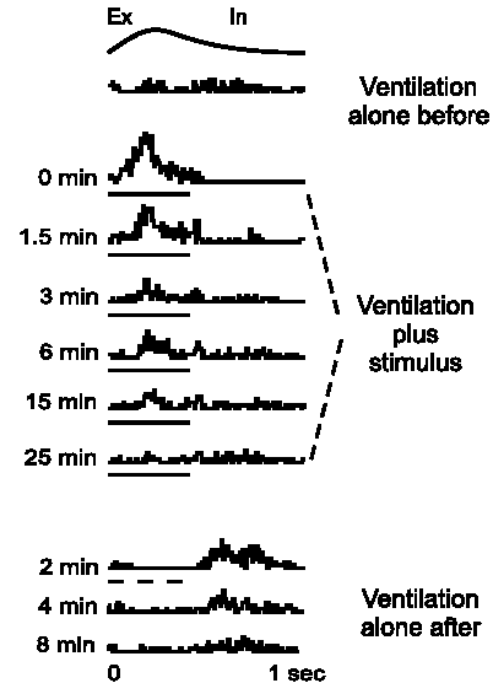
Mormyrid
ELL



Gymnotid
ELL



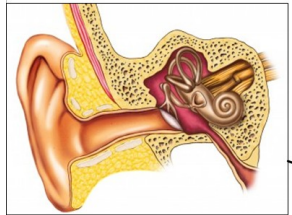
Elasmobranch
DON



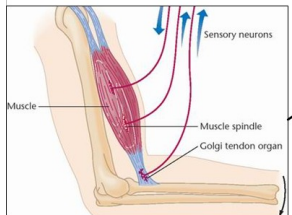
Mammals: Sensory system activated during movement



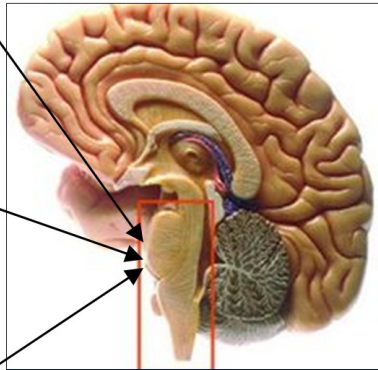
Vision



Vestibular System
(inner ear)



Proprioception
(joint & muscle
movement receptors)

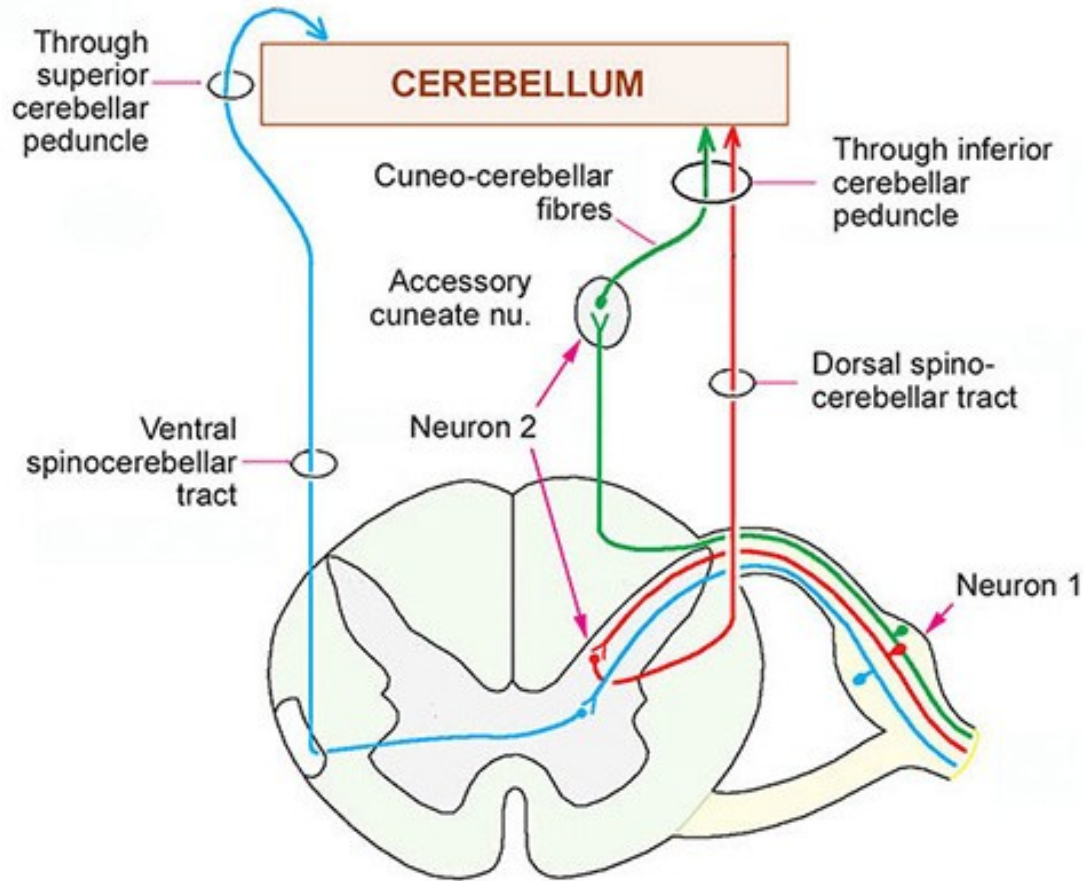


Vision, vestibular system
and proprioceptive inputs
converge onto the
brainstem

- Movement involves visual, vestibular and proprioceptive inputs
 - How can the brain distinguish between consequences of our own self-generated actions (sensory re-afference) and stimulation that is externally produced (sensory ex-afference) ?
- **Hypothesis** : prediction of sensory consequences

[experiment]

Prediction of sensory consequences : two input streams



dorsal spinocerebellar tract

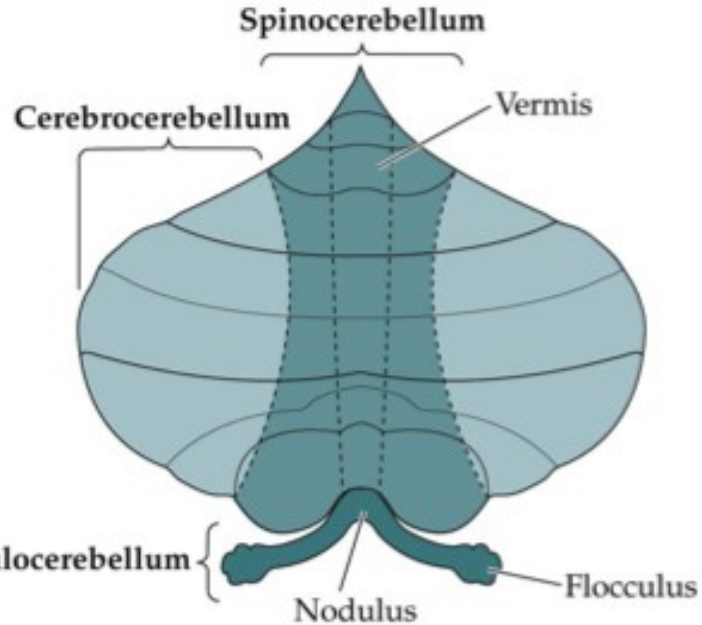
- conveys somatosensory information from muscle and joint receptors
- sensory feedback about consequences of movement (active or passiv)
→ reafference signal

ventral spinocerebellar tract

- active only during active movement
- cells receive same inputs as spinal motor neurons
→ efference copy/corollary discharge

both provide information from hind limbs

Three subdivisions of the cerebellum : related movements



Vestibulocerebellum

- Input: Vestibular, visual path
- Output: Feedback to the vestibular nuclei
- Vestibulo-cerebellar system modulating vestibular influences on posture & eye movement

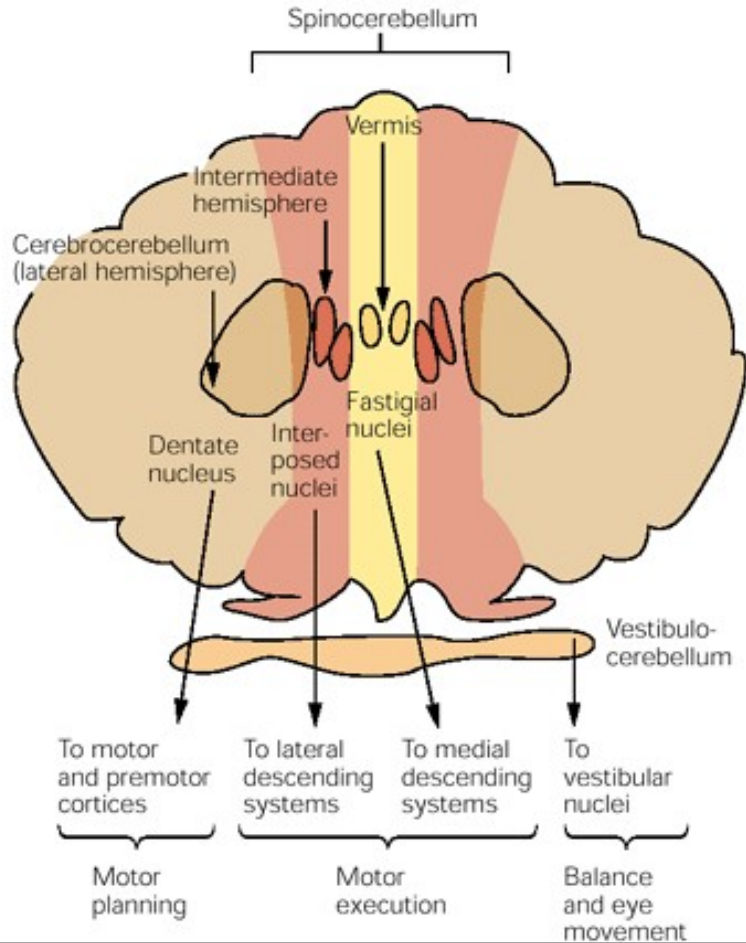
Spinocerebellum

- Input: Somatosensory, proprioceptive via the spinal cord
- Output: Brain stem reticular, lateral vestibular nuclei
- Spino-cerebellar system regulating muscle tone, posture & locomotion

Cerebrocerebellum

- Input: Cortico-pontine
- Output: Feedback dentate, thalamus, motor and premotor cortex
- Cerebro-cerebellar system regulating skilled movement.

Three subdivisions and their output pathways



Vestibulocerebellum

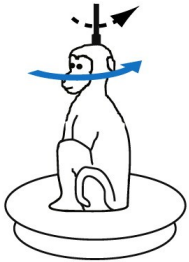
Spinocerebellum

Cerebrocerebellum

Monkey experiment: sensory processing in cerebellum

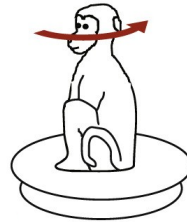
Passive

head motion



Active

head motion



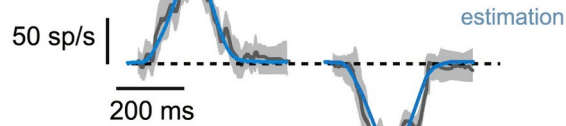
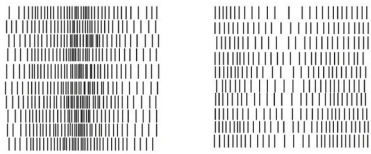
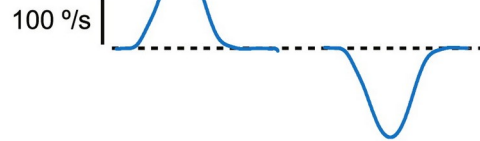
behavioral paradigm

- passive versus active movement in monkeys
- passive movement : unexpected vestibular stimulation (exafference)
- active movement : voluntary action evoked vestibular input (vestibular reafference)

Cells responsive to passive but not active movement

unimodal cell

Passive
head motion



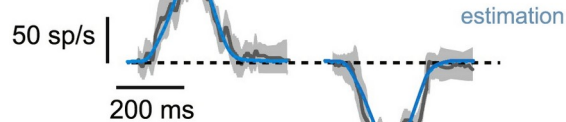
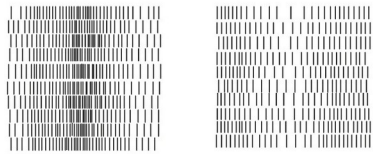
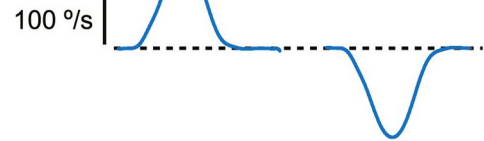
- cells (unimodal and bimodal) were strongly modulated during passive head and body motion

Cells responsive to passive but not active movement

unimodal cell

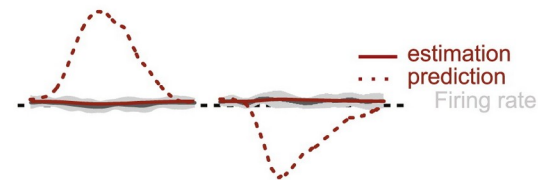
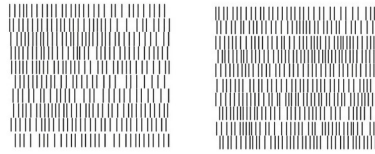
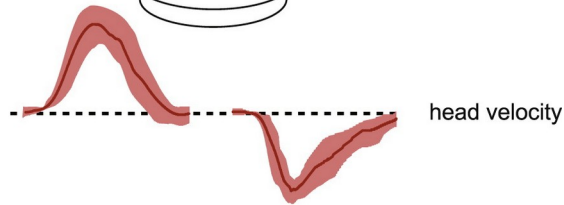
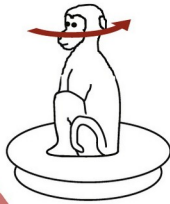
Passive

head motion



Active

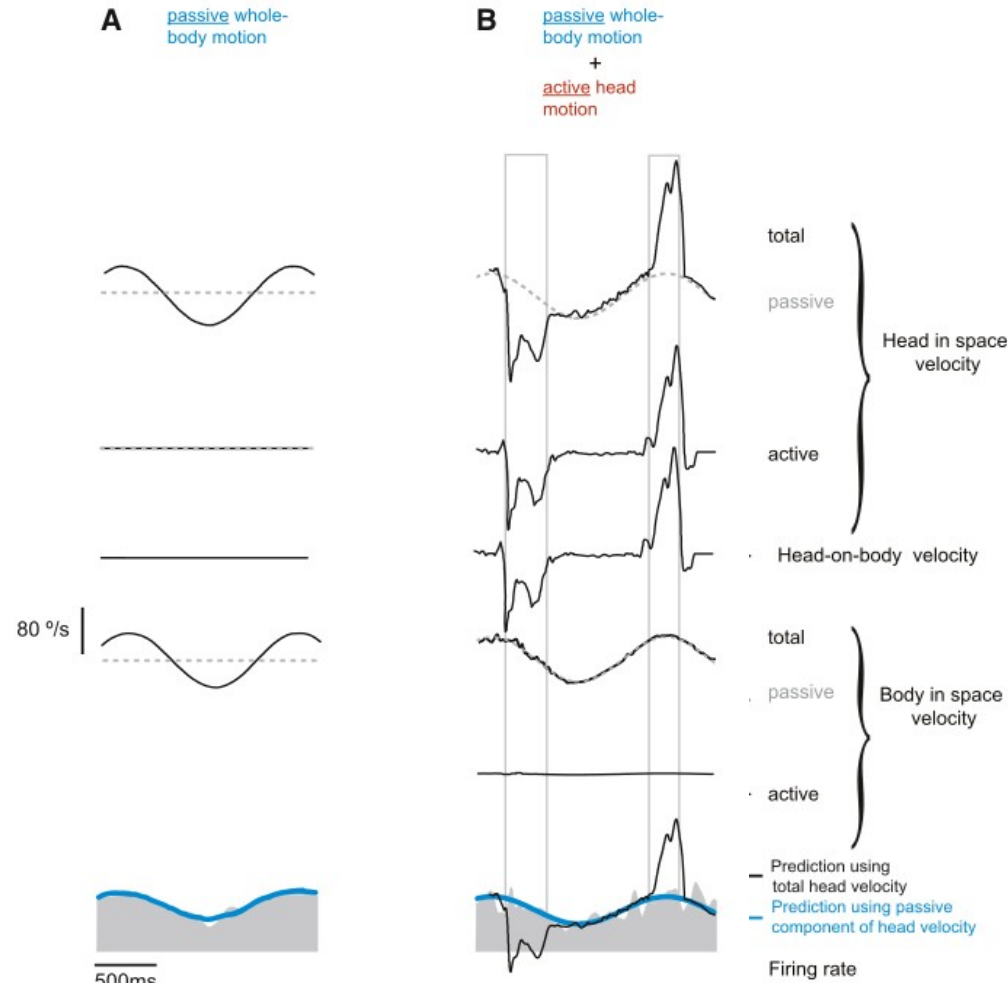
head motion



- cells (unimodal and bimodal) were strongly modulated during *passive* head and body motion
- same cells were unresponsive to same motion when voluntarily produced

Neurons selectively respond to passive movement

unimodal cell



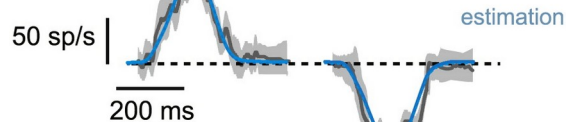
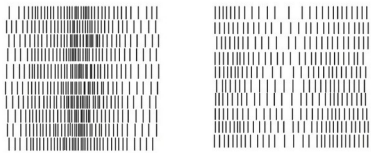
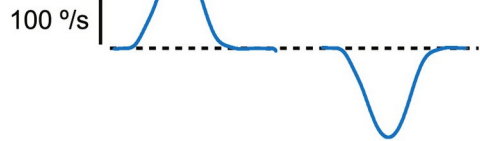
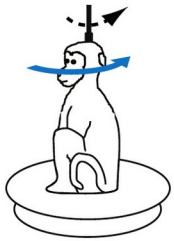
- unimodal neurons respond selectively to passively applied stimulation
- in combined movements – passive and active – the neuron robustly encode head motion due to passively applied rotation

Experimental evidence in mammals for predictive signal

unimodal cell

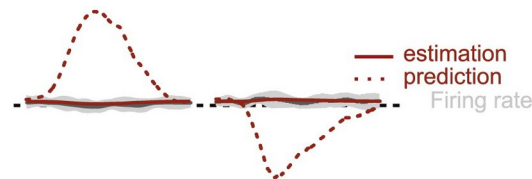
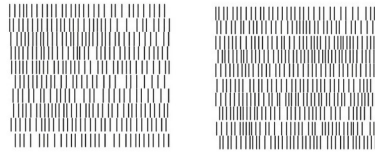
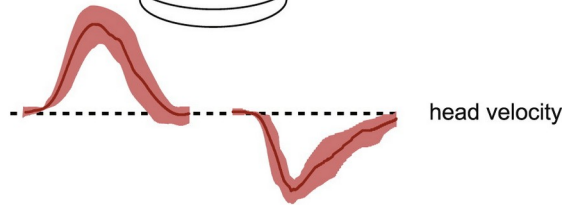
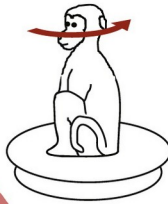
Passive

head motion



Active

head motion



- cells in fastigial nucleus encode unexpected movements of head and body
- supports the notion that the cerebellum computes a prediction of sensory consequences which is compared to the sensory consequences of the actual movement

[Brooks & Cullen 2012 Current Biol]

Talk outline

1. Cerebellar disorders

- functions inferred from symptoms
- eye-arm movement coordination with prism glasses

2. Prediction of sensory consequences

Electric fish

- anatomy and physiology of the weakly electric fish
- cerebellar circuitry
- cerebellum-like structures
- electric fish and prediction of sensory consequences

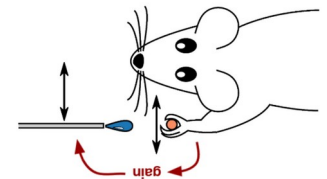
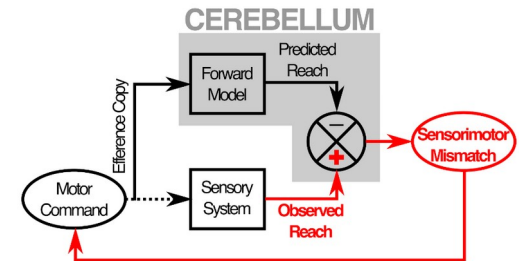
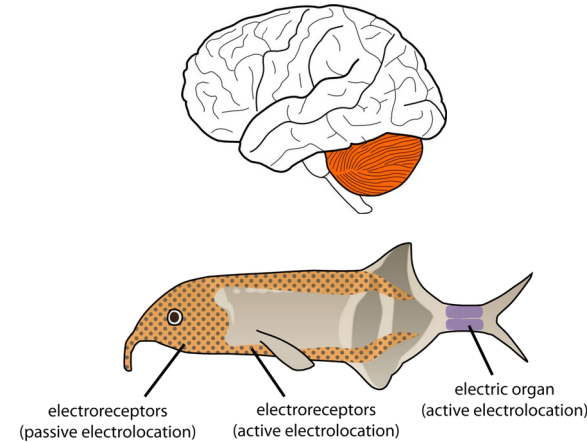
Sensory prediction in mammals

3. Motor control and internal models

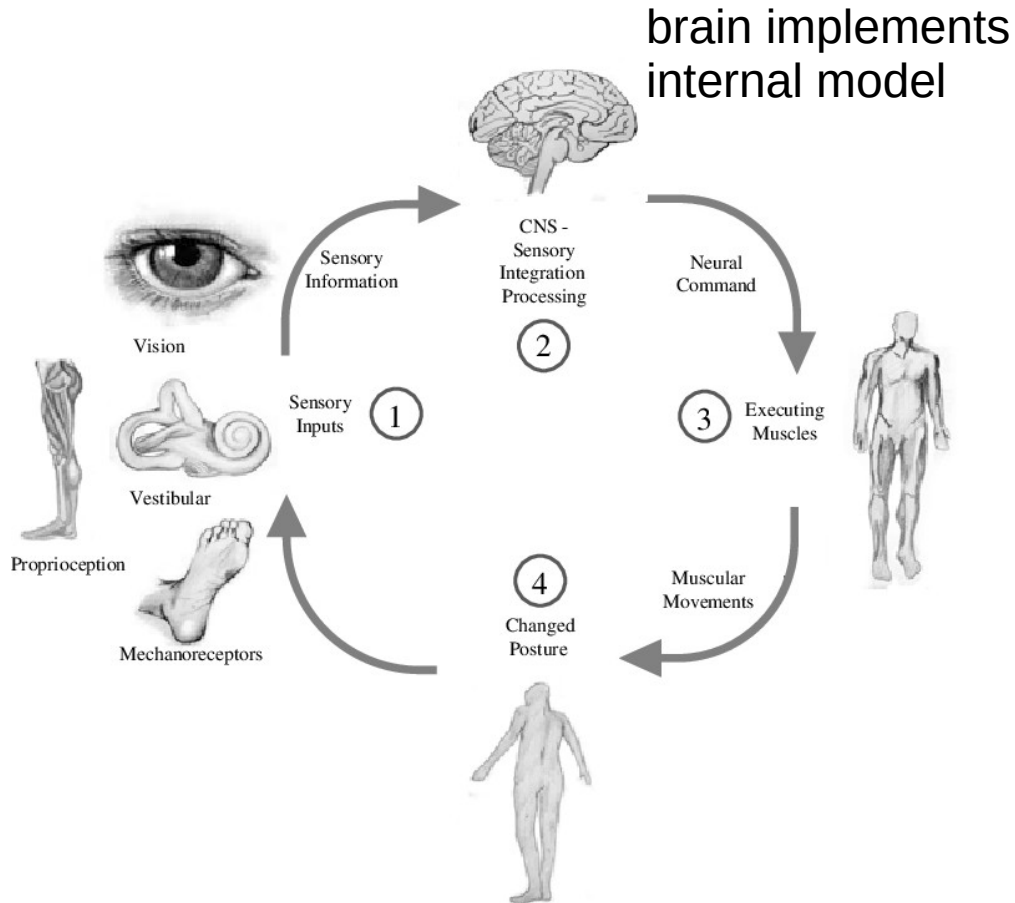
- forward and inverse model
- forward model and the cerebellum

4. Experiments implemented in the lab to unravel cerebellar function

- sensorimotor mismatches in mice



Theory : motor execution based on internal model

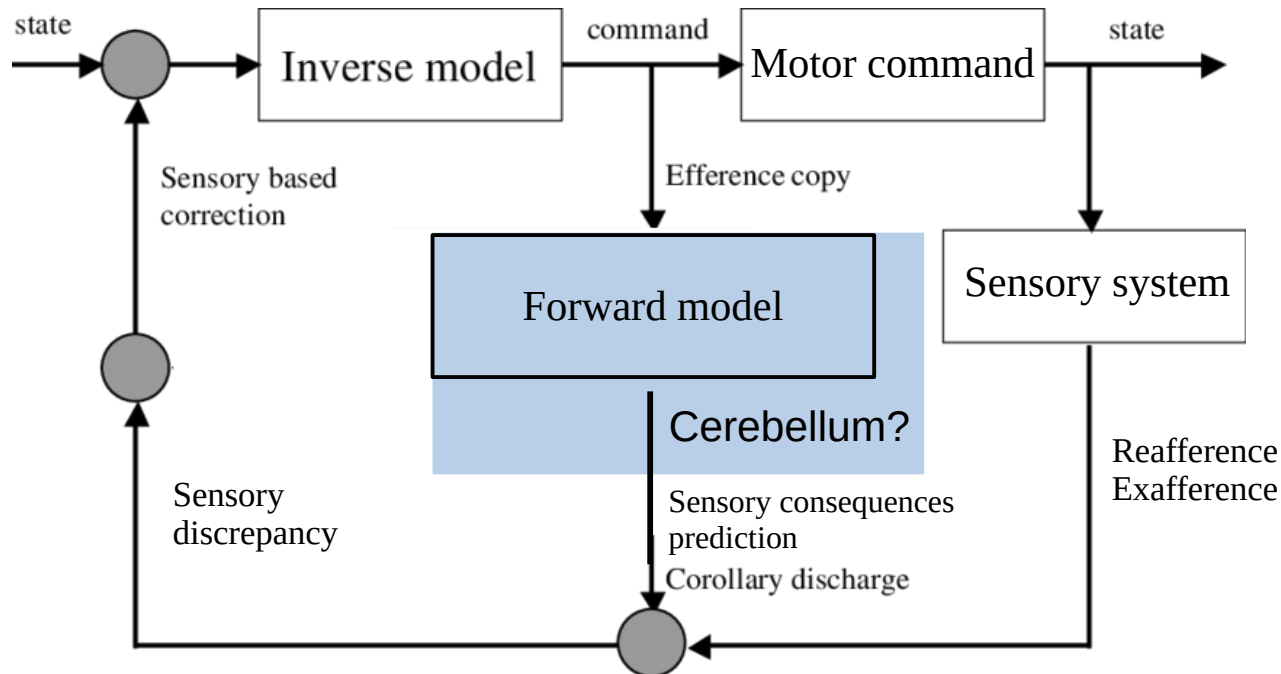


- internal model simulates the behavior of the sensorimotor system
- internal model allows the CNS to predict the consequences of motor commands and to determine the motor commands required to perform specific tasks

Models of motor control

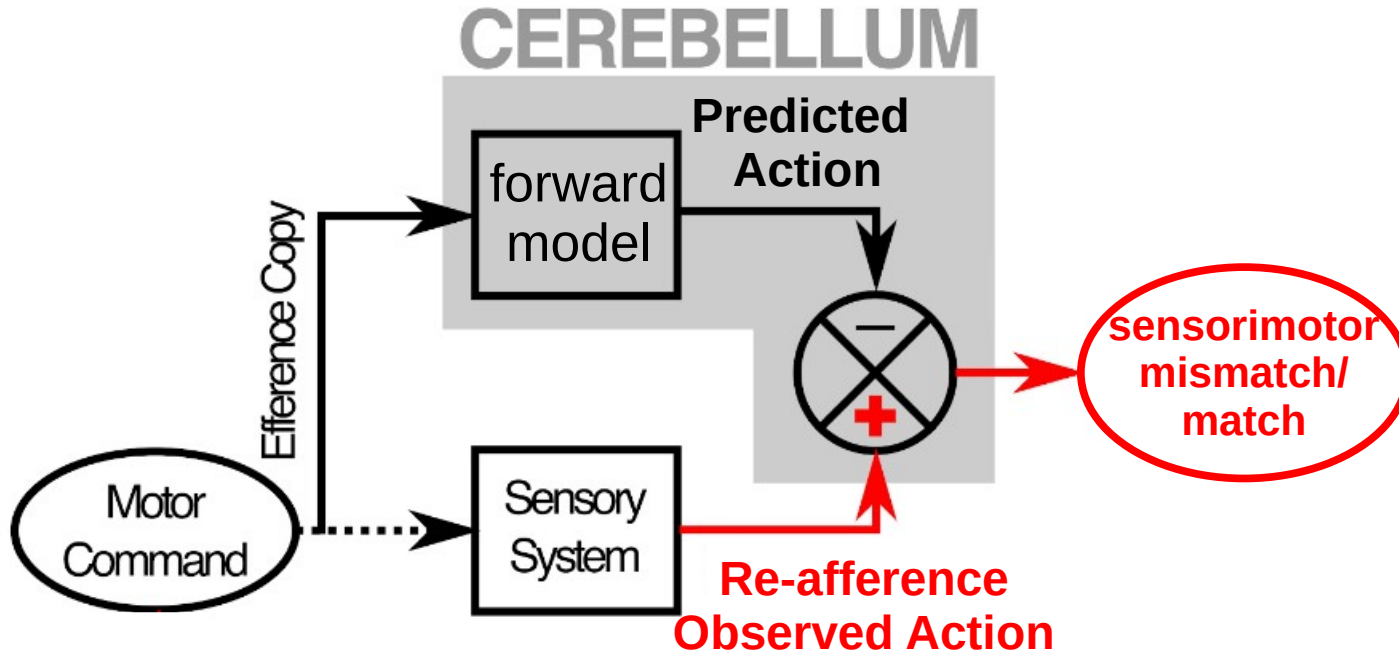
forward model : predict the sensorimotor consequences (feedback) of the motor command, predict future state

inverse model : convert desired action into appropriate motor commands



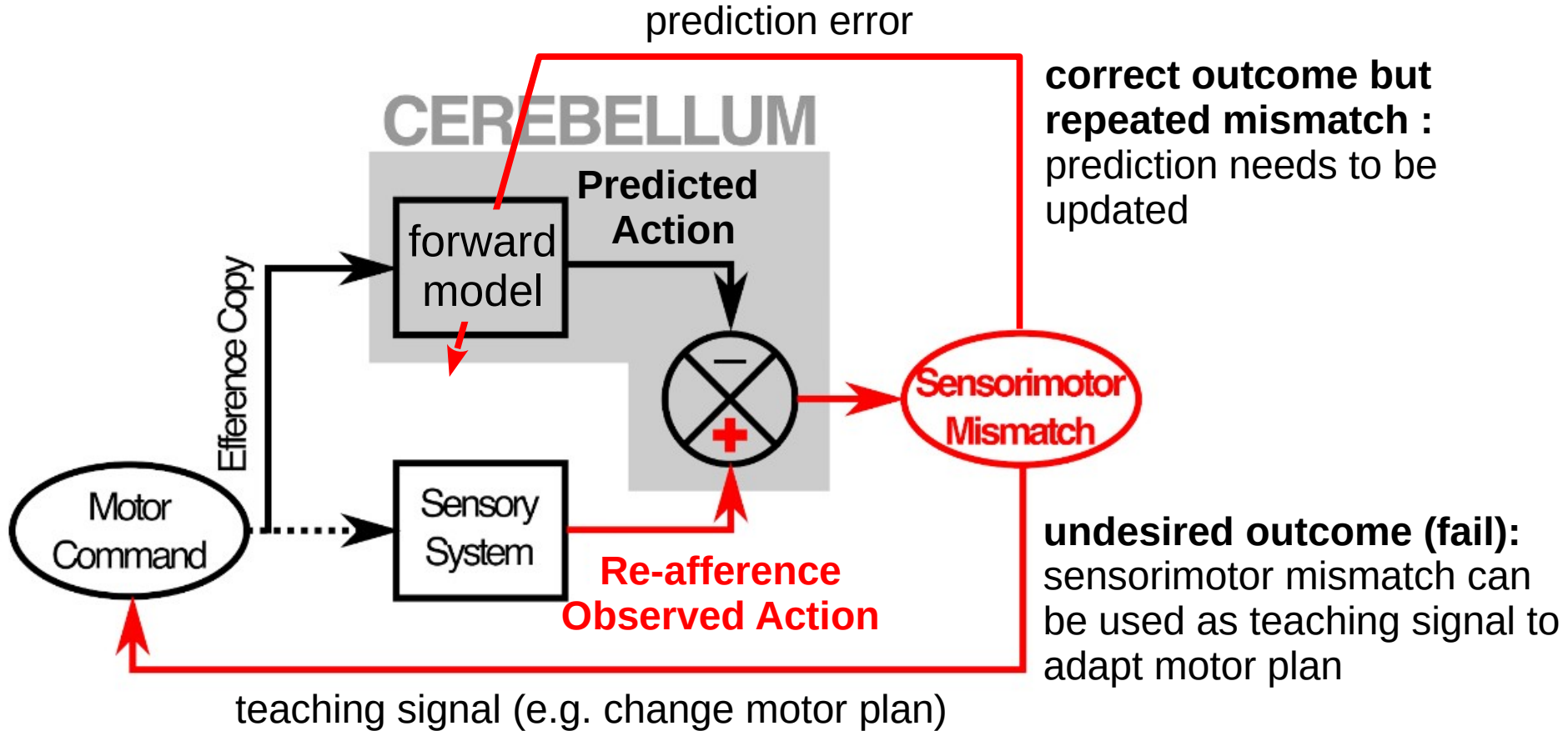
Schematic representation of inverse and forward models for the control of movement

Suggestion : Cerebellum implements a forward model

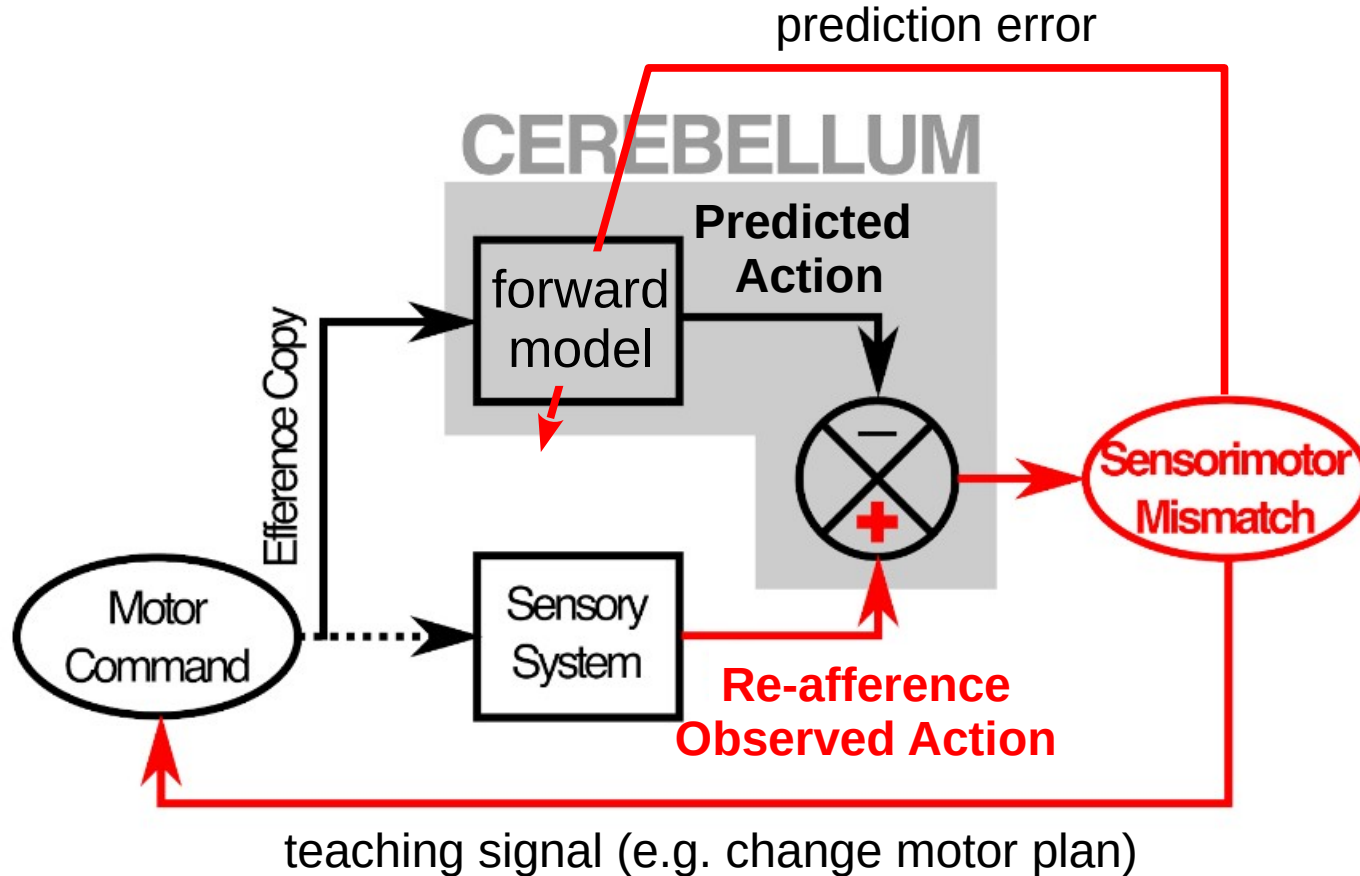


- cerebellum computes a prediction of sensory consequences which is compared to the sensory consequences of the actual movement
- **sensorimotor match:** the sensory efference should be interpreted as internally caused
- **sensorimotor mismatch:** the difference between the actual and the predicted input should be interpreted as externally caused

Sensorimotor mismatch



Suggestion : Cerebellum implements a forward model

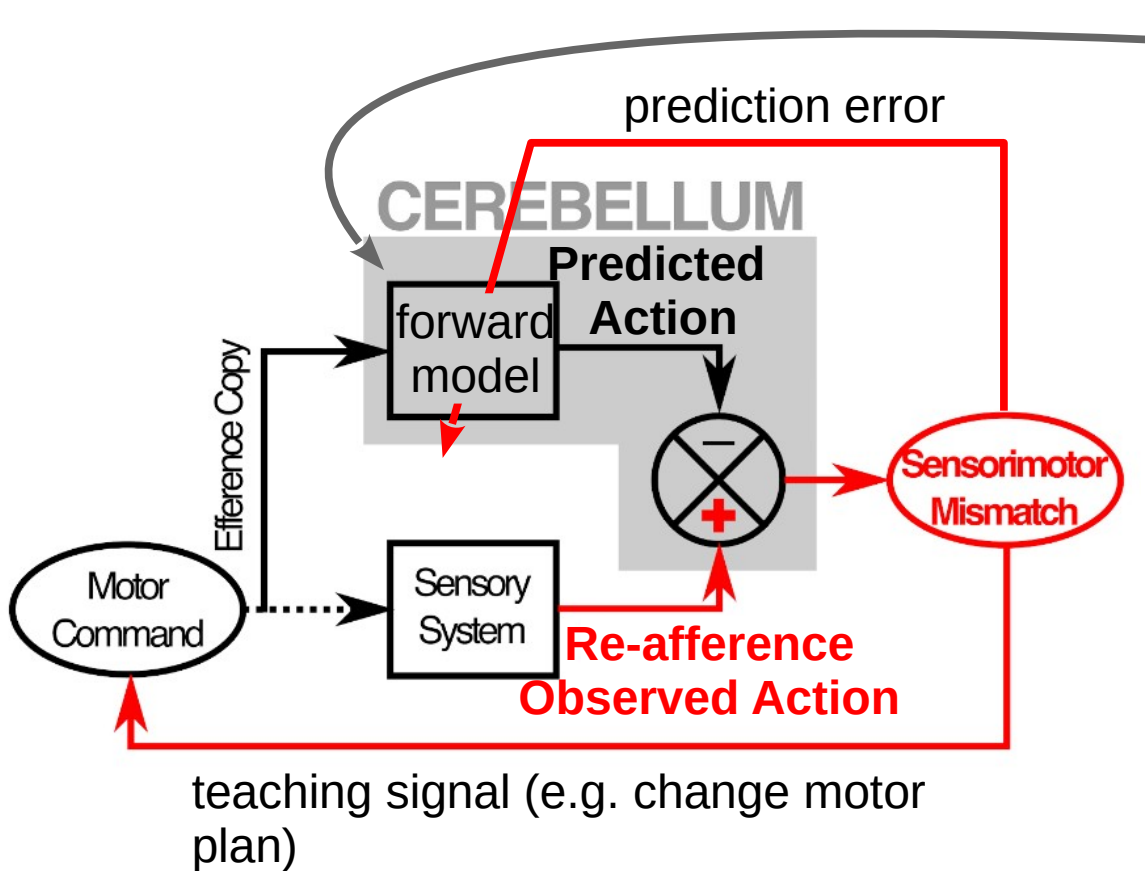


- cerebellum computes a prediction of sensory consequences which is compared to the sensory consequences of the actual movement

usefulness

- comparison can be used to compute error used as teaching signal to update the motor program
- computation of sensory prediction errors enables brain to distinguish between self-generated and externally produced actions

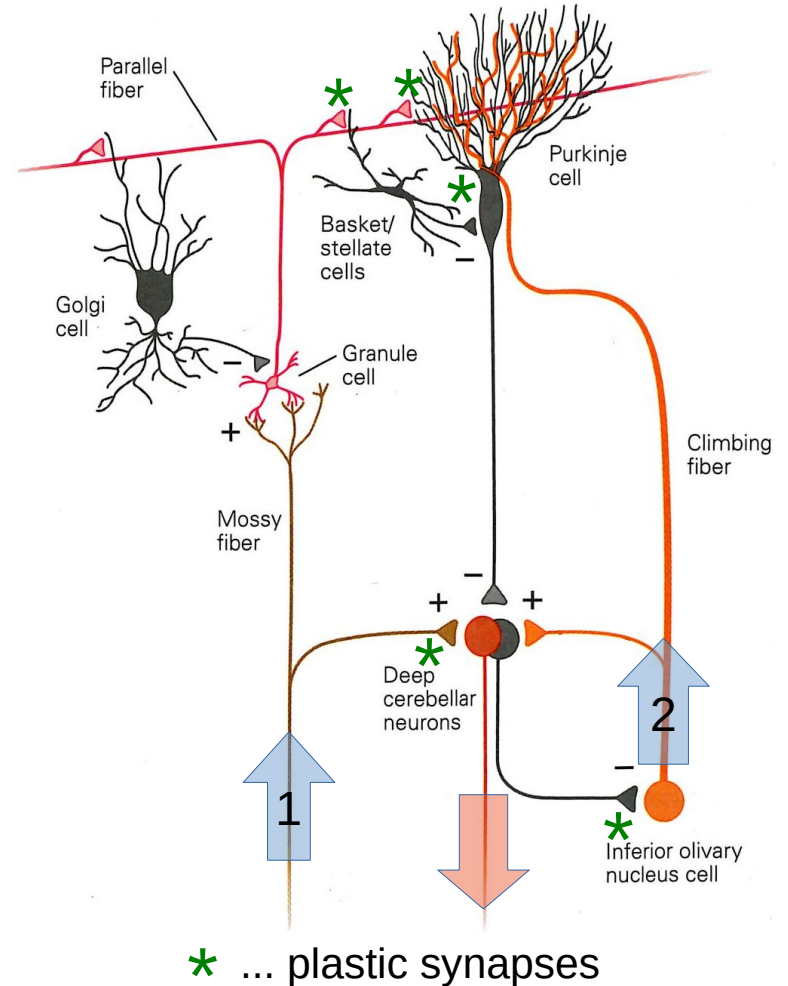
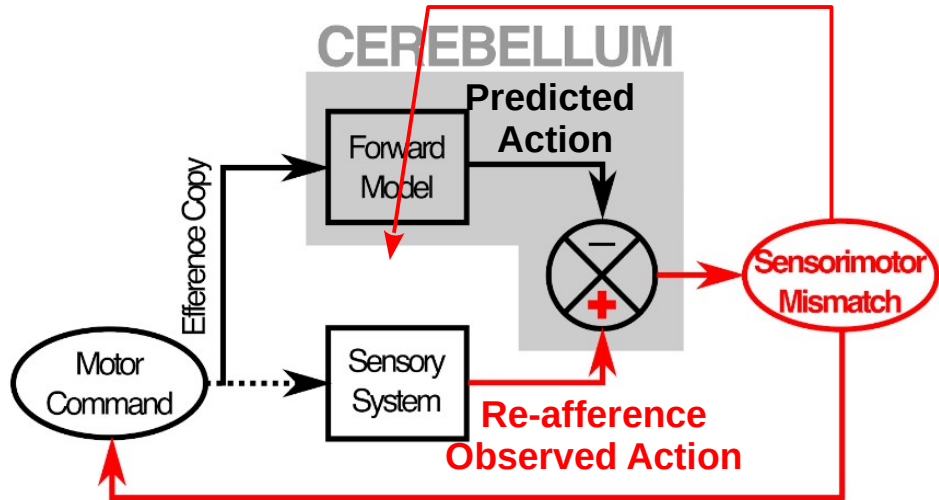
Forward model requires an adaptive filter



calculation of prediction based on adaptive filter:

- input signals consists of a large number of components
- combining these components by weighting them individually and then summing to produce the filter output
- adjustment of the weights by a teaching signal

Forward model requirements



- two distinct input streams :
 - mossy and climbing fibers
- adaptive filter requires to adjust prediction during learning, or due to changes in environment :
 - parallel fiber → Purkinje cell synapse
 - mossy fiber → deep cerebellar nuclei synapse

* ... plastic synapses

Talk outline

1. Cerebellar disorders

- functions inferred from symptoms
- eye-arm movement coordination with prism glasses

2. Prediction of sensory consequences

Electric fish

- anatomy and physiology of the weakly electric fish
- cerebellar circuitry
- cerebellum-like structures
- electric fish and prediction of sensory consequences

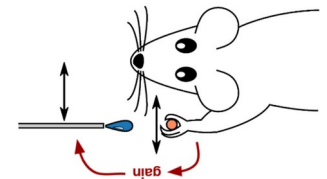
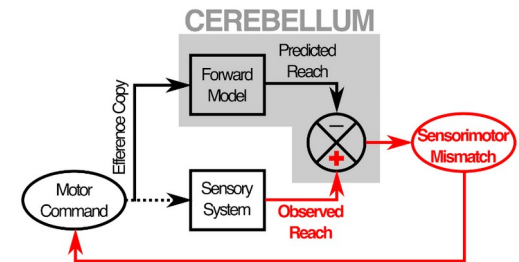
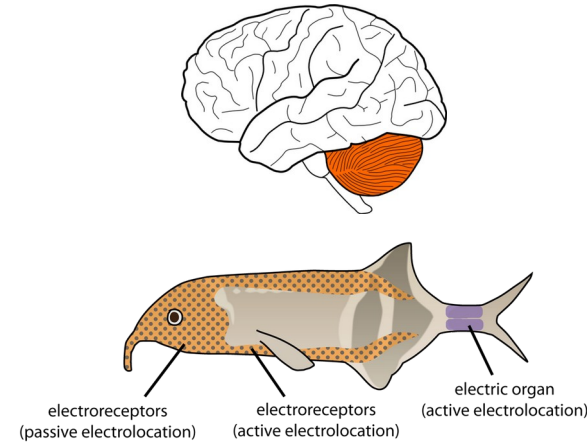
Sensory prediction in mammals

3. Motor control and internal models

- forward and inverse model
- forward model and the cerebellum

4. Experiments implemented in the lab to unravel cerebellar function

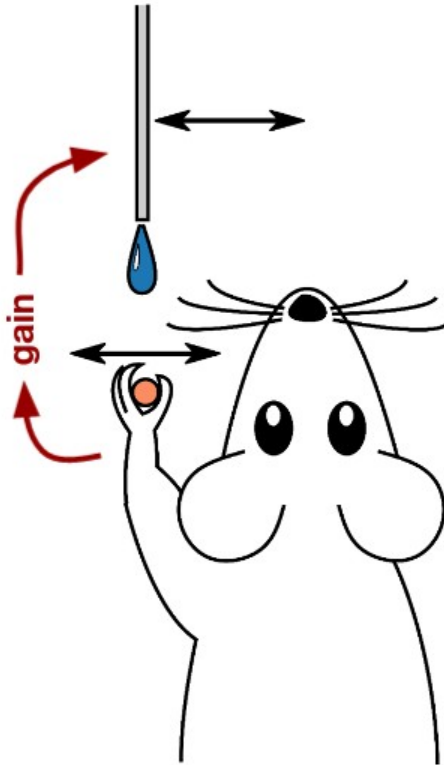
- sensorimotor mismatches in mice



Project : Adaptation to sensorimotor mismatches in the Cerebellum

Aim : Study cellular underpinnings of sensorimotor mismatch of whisker-paw coordination in rodent cerebellum.

Method :



- Mice move feeding tube towards mouth to receive reward, by manipulating joystick with forelimb
- Feeding tube coupled to joystick in closed-loop by variable gain ratio
- Mice adapt their behaviour to varying gain ratios
- Control: **gain = 1.0**
- Test: **gain = 2.0**

$$V_{\text{wall}} = -V_{\text{walking}}$$

Project : Adaptation to sensorimotor mismatches in the Cerebellum

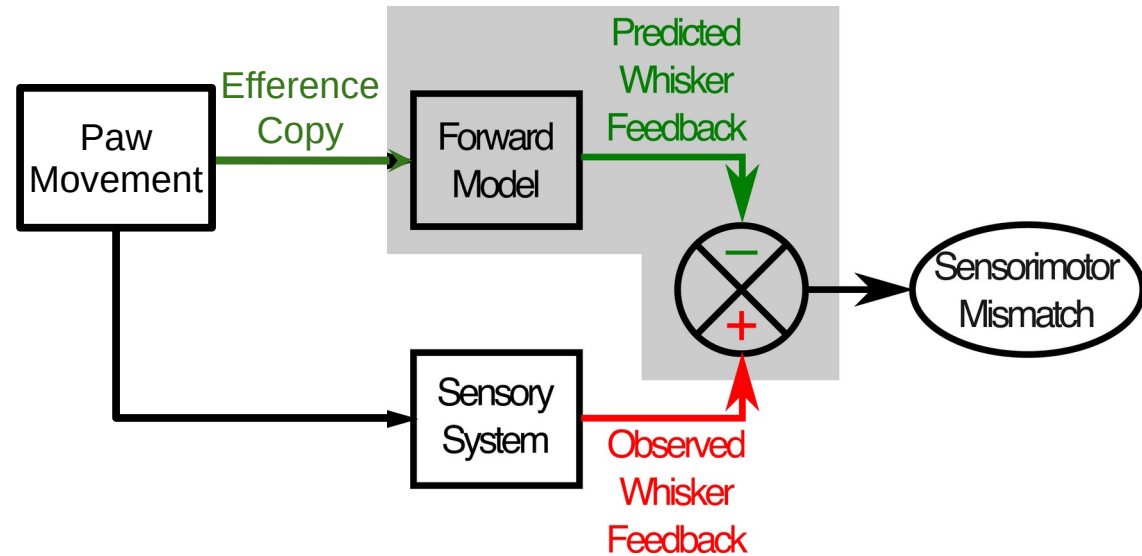
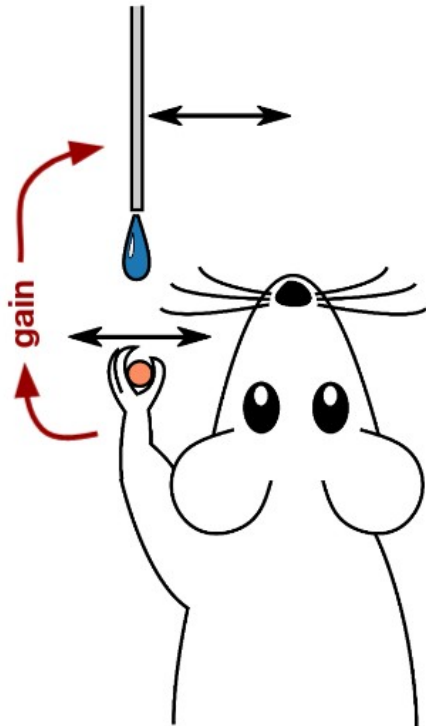
Aim : Study cellular underpinnings of sensorimotor mismatch of whisker-paw coordination in rodent cerebellum.

Paradigm :

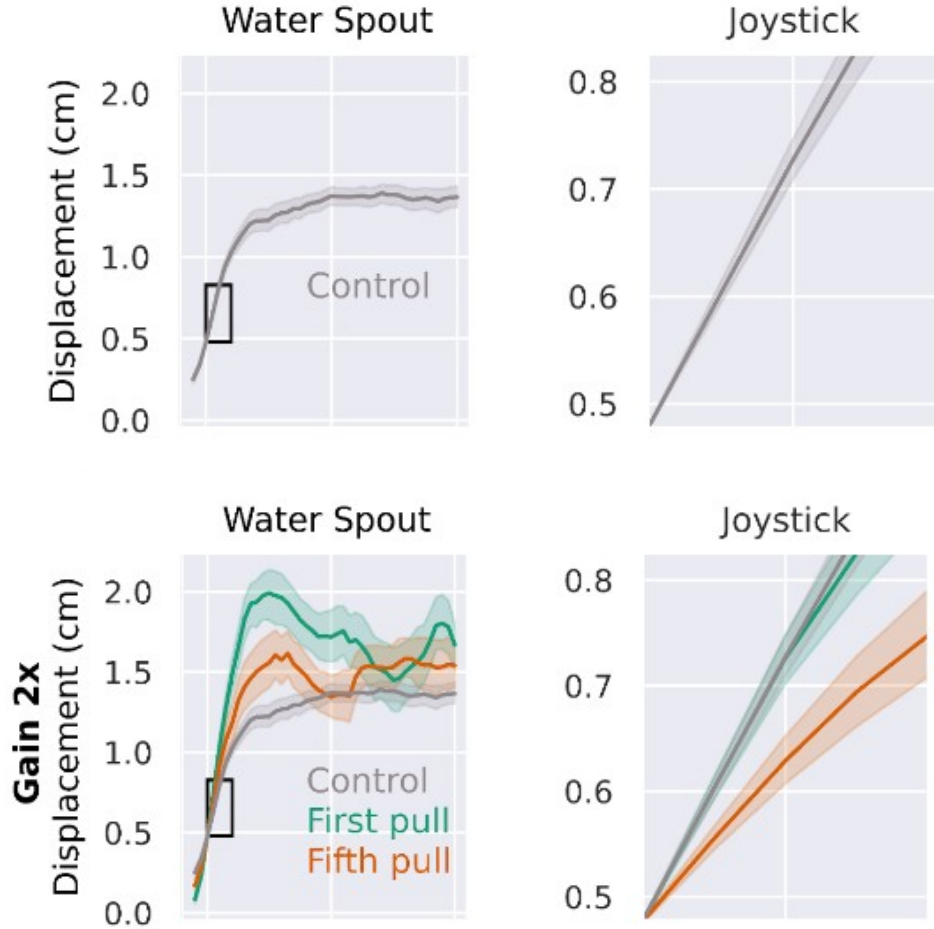
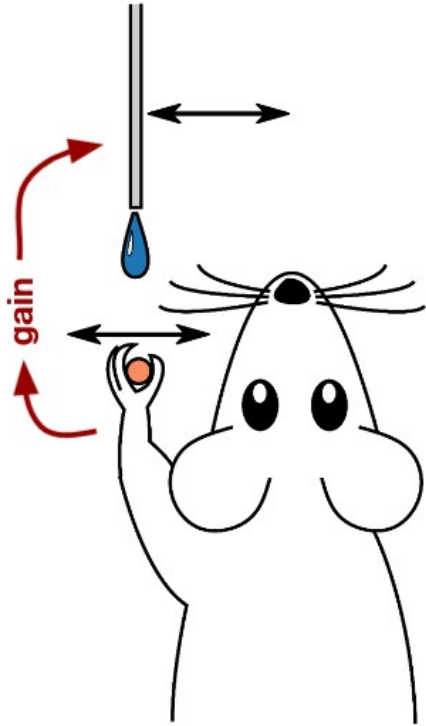
[video]

Aim: mismatch between expected and observed whisker feedback

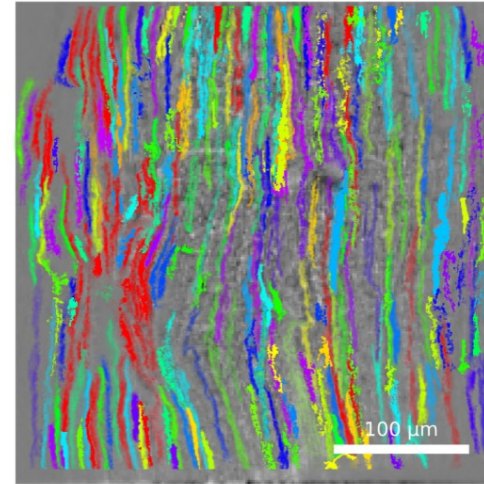
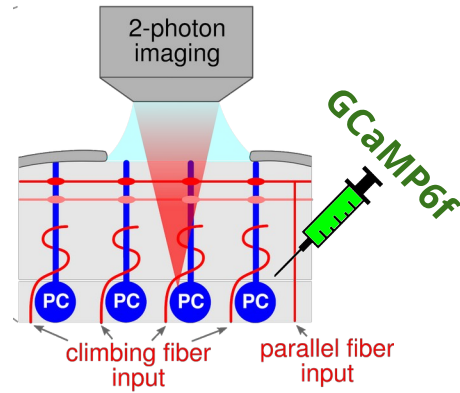
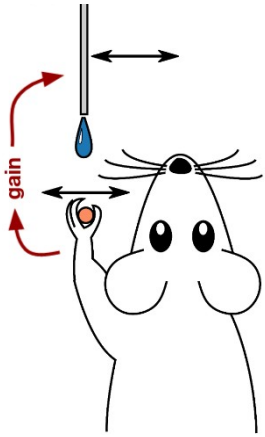
Aim : Study cellular underpinnings of sensorimotor mismatch of whisker-paw coordination in rodent cerebellum.



Behavior: Mice overshoot after gain increase and adapt rapidly



Two-photon calcium imaging from Purkinje cells



Purkinje
cells
complex
spikes

Questions :

1. Do we find neural correlates for efferent copy and re-afference ?
2. At which stage could a comparison between the two take place ?
3. What is the cellular signature of the sensorimotor mismatch in the cerebellar cortex ?

Talk outline

1. Cerebellar disorders

- functions inferred from symptoms
- eye-arm movement coordination with prism glasses

2. Prediction of sensory consequences

Electric fish

- anatomy and physiology of the weakly electric fish
- cerebellar circuitry
- cerebellum-like structures
- electric fish and prediction of sensory consequences

Sensory prediction in mammals

3. Motor control and internal models

- forward and inverse model
- forward model and the cerebellum

4. Experiments implemented in the lab to unravel cerebellar function

- sensorimotor mismatches in mice

